



**INTERNATIONAL  
GEMOLOGICAL  
INSTITUTE**

**ELECTRONIC COPY**



January 1, 2026

IGI Report Number **LG761533900**

**EMERALD CUT  
LABORATORY GROWN DIAMOND**

**5.02 X 3.57 X 2.46 MM**

Carat Weight **0.43 CARAT**  
Color Grade **E**  
Clarity Grade **VS 1**  
Polish **EXCELLENT**  
Symmetry **EXCELLENT**  
Fluorescence **NONE**  
Inscription(s) **IGI LG761533900**

Comments: This Laboratory Grown Diamond was created by Chemical Vapor Deposition (CVD) growth process. Type IIa

**LABORATORY GROWN DIAMOND REPORT**

January 1, 2026

IGI Report Number

**LG761533900**

Description

**LABORATORY GROWN DIAMOND**

Shape and Cutting Style

**EMERALD CUT**

Measurements

**5.02 X 3.57 X 2.46 MM**

**GRADING RESULTS**

Carat Weight

**0.43 CARAT**

Color Grade

**E**

Clarity Grade

**VS 1**

**ADDITIONAL GRADING INFORMATION**

Polish

**EXCELLENT**

Symmetry

**EXCELLENT**

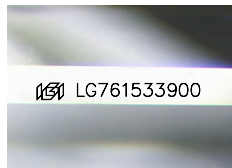
Fluorescence

**NONE**

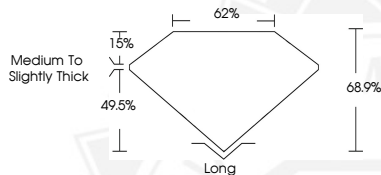
Inscription(s)

**IGI LG761533900**

Comments: This Laboratory Grown Diamond was created by Chemical Vapor Deposition (CVD) growth process. Type IIa



Sample Image Used



Medium To Slightly Thick



January 1, 2026

IGI Report Number **LG761533900**

**EMERALD CUT  
LABORATORY GROWN DIAMOND**

**5.02 X 3.57 X 2.46 MM**

Carat Weight **0.43 CARAT**  
Color Grade **E**  
Clarity Grade **VS 1**  
Polish **EXCELLENT**  
Symmetry **EXCELLENT**  
Fluorescence **NONE**  
Inscription(s) **IGI LG761533900**

Comments: This Laboratory Grown Diamond was created by Chemical Vapor Deposition (CVD) growth process. Type IIa



THIS DOCUMENT WAS PRODUCED WITH THE FOLLOWING SECURITY MEASURES: SPECIAL DOCUMENT PAPER, INK SCREENS, WATERMARK, BACKGROUND DESIGNS, HOLOGRAM AND OTHER SECURITY FEATURES NOT LISTED AND DO EXCEED DOCUMENT SECURITY INDUSTRY GUIDELINES.

For terms & conditions and to verify this report, please visit [www.igi.org](http://www.igi.org)