



January 1, 2026

IGI Report Number **LG761533899**

**PRINCESS CUT  
LABORATORY GROWN DIAMOND**

**3.60 X 3.49 X 2.54 MM**

Carat Weight **0.28 CARAT**  
Color Grade **E**  
Clarity Grade **VS 1**  
Polish **EXCELLENT**  
Symmetry **EXCELLENT**  
Fluorescence **NONE**  
Inscription(s) **IGI LG761533899**

Comments: This Laboratory Grown Diamond was created by Chemical Vapor Deposition (CVD) growth process. Type IIa

**LABORATORY GROWN DIAMOND REPORT**

January 1, 2026

IGI Report Number

**LG761533899**

Description

**LABORATORY GROWN DIAMOND**

Shape and Cutting Style

**PRINCESS CUT**

Measurements

**3.60 X 3.49 X 2.54 MM**

**GRADING RESULTS**

Carat Weight

**0.28 CARAT**

Color Grade

**E**

Clarity Grade

**VS 1**

**ADDITIONAL GRADING INFORMATION**

Polish

**EXCELLENT**

Symmetry

**EXCELLENT**

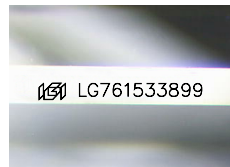
Fluorescence

**NONE**

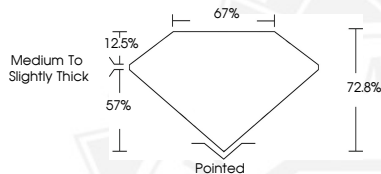
Inscription(s)

**IGI LG761533899**

Comments: This Laboratory Grown Diamond was created by Chemical Vapor Deposition (CVD) growth process. Type IIa



Sample Image Used



January 1, 2026

IGI Report Number **LG761533899**

**PRINCESS CUT**

**LABORATORY GROWN DIAMOND**

**3.60 X 3.49 X 2.54 MM**

Carat Weight **0.28 CARAT**  
Color Grade **E**  
Clarity Grade **VS 1**  
Polish **EXCELLENT**  
Symmetry **EXCELLENT**  
Fluorescence **NONE**  
Inscription(s) **IGI LG761533899**

Comments: This Laboratory Grown Diamond was created by Chemical Vapor Deposition (CVD) growth process. Type IIa



THIS DOCUMENT WAS PRODUCED WITH THE FOLLOWING SECURITY MEASURES: SPECIAL DOCUMENT PAPER, INK SCREENS, WATERMARK, BACKGROUND DESIGNS, HOLOGRAM AND OTHER SECURITY FEATURES NOT LISTED AND DO EXCEED DOCUMENT SECURITY INDUSTRY GUIDELINES.