



ELECTRONIC COPY

LABORATORY GROWN DIAMOND REPORT

LG761529532
Report verification at igi.org

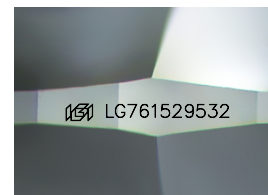
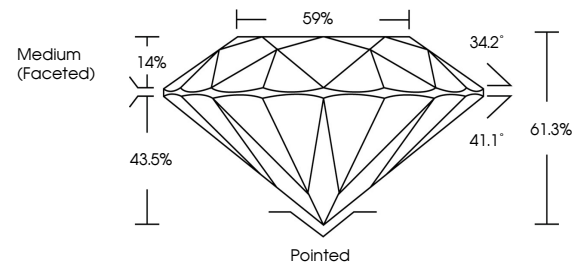
December 30, 2025	
IGI Report Number	LG761529532
Description	LABORATORY GROWN DIAMOND
Shape and Cutting Style	ROUND BRILLIANT
Measurements	8.13 - 8.17 X 4.99 MM
GRADING RESULTS	
Carat Weight	2.03 CARATS
Color Grade	D
Clarity Grade	VVS 2
Cut Grade	IDEAL

ADDITIONAL GRADING INFORMATION

Polish	EXCELLENT
Symmetry	EXCELLENT
Fluorescence	NONE
Inscription(s)	 LG761529532

Comments: This Laboratory Grown Diamond was created by Chemical Vapor Deposition (CVD) growth process.
Type IIa

PROPORTIONS



Sample Image Used

COLOR

D E F G H I J Faint Very Light Light

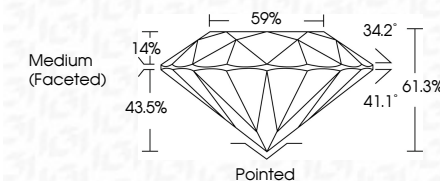
CLARITY

FL	IF	VVS ¹⁻²	VS ¹⁻²	SI ¹⁻²	I ¹⁻³
Flawless	Internally Flawless	Very Very Slightly Included	Very Slightly Included	Slightly Included	Included

LABORATORY GROWN DIAMOND REPORT



December 30, 2025	
IGI Report Number	LG761529532
Description	LABORATORY GROWN DIAMOND
Shape and Cutting Style	ROUND BRILLIANT
Measurements	8.13 - 8.17 X 4.99 MM
GRADING RESULTS	
Carat Weight	2.03 CARATS
Color Grade	D
Clarity Grade	VVS 2
Cut Grade	IDEAL



ADDITIONAL GRADING INFORMATION

Polish	EXCELLENT
Symmetry	EXCELLENT
Fluorescence	NONE
Inscription(s)	 LG761529532
<p>Comments: This Laboratory Grown Diamond was created by Chemical Vapor Deposition (CVD) growth process.</p> <p>Type IIa</p>	



© IGI 2020, International Gemological Institute

FD - 10 20



THIS DOCUMENT WAS PRODUCED WITH THE FOLLOWING SECURITY MEASURES: SPECIAL DOCUMENT PAPER, INK SCREENS, WATERMARK, BACKGROUND DESIGNS, HOLOGRAM AND OTHER SECURITY FEATURES NOT LISTED AND DO EXCEED DOCUMENT SECURITY INDUSTRY GUIDELINES

www.igi.org

December 30, 2025
IGI Report No LG761529532
ROUND BRILLIANT

8.13 - 8.17 X 4.99 MM

8.13 - 8.17 X 4.99 MM
Carat Weight
2.03 CARATS

Cardinal Weir III	ZUS CARAIS
Color Grade	D

Clarity Grade	WS2
FL	0.00
IF	0.00
VS1	0.00
VS2	0.00
SI1	0.00
SI2	0.00
I1	0.00
I2	0.00
I3	0.00
P1	0.00
P2	0.00
P3	0.00
NP	0.00
CA	0.00
FA	0.00
NA	0.00
Other	0.00
Total	0.00

Quality Grade	VVS2	IDEAL
Out Grade		

Depth	61.3%
-------	-------

Table	59%
Girdle	59%

Girdle

Culet	Pointed

Culet	Pointed
Polish	EXCELLENT

Polish	EXCELLENT
Symmetry	EXCELLENT

Fluorescence	NONE
--------------	------

Comments:
This laboratory covers Norm and 1.1000

This Laboratory Grown Diamond was created by Chemical Vapor Deposition

created by chemical vapor deposition (CVD) growth process.
Type IIa

Type IIa