



ELECTRONIC COPY

LG761524168
Report verification at igi.org



January 21, 2026

IGI Report Number **LG761524168**

Description **LABORATORY GROWN DIAMOND**

Shape and Cutting Style **CUT CORNERED
RECTANGULAR MODIFIED
BRILLIANT**

Measurements **8.50 X 6.17 X 4.28 MM**

GRADING RESULTS

Carat Weight **2.08 CARATS**

Color Grade **FANCY VIVID PINK**

Clarity Grade **VS 1**

January 21, 2026

IGI Report Number **LG761524168**

Description **LABORATORY GROWN DIAMOND**

Shape and Cutting Style **CUT CORNERED RECTANGULAR
MODIFIED BRILLIANT**

Measurements **8.50 X 6.17 X 4.28 MM**

GRADING RESULTS

Carat Weight **2.08 CARATS**

Color Grade **FANCY VIVID PINK**

Clarity Grade **VS 1**

ADDITIONAL GRADING INFORMATION

Polish **VERY GOOD**

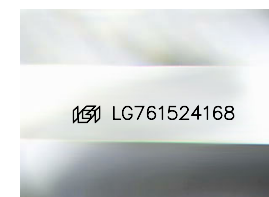
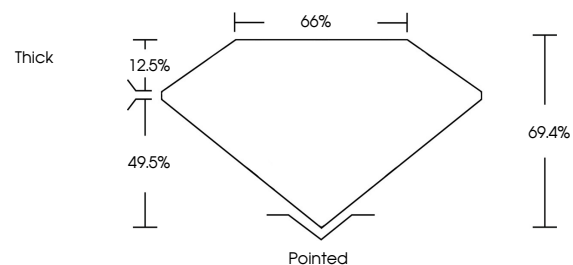
Symmetry **VERY GOOD**

Fluorescence **SLIGHT**

Inscription(s) **IGI LG761524168**

Comments: This Laboratory Grown Diamond was created by Chemical Vapor Deposition (CVD) growth process.
Indications of post-growth treatment.

PROPORTIONS



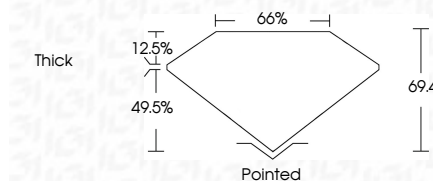
Sample Image Used

COLOR

D E F G H I J Faint Very Light Light

CLARITY

| FL | IF | VS ¹⁻² | VS ¹⁻² | SI ¹⁻² | I ¹⁻³ |
|----------|---------------------|-----------------------------|------------------------|-------------------|------------------|
| Flawless | Internally Flawless | Very Very Slightly Included | Very Slightly Included | Slightly Included | Included |



ADDITIONAL GRADING INFORMATION

Polish **VERY GOOD**

Symmetry **VERY GOOD**

Fluorescence **SLIGHT**

Inscription(s) **IGI LG761524168**

Comments: This Laboratory Grown Diamond was created by Chemical Vapor Deposition (CVD) growth process.
Indications of post-growth treatment.



IGI



January 21, 2026
IGI Report No LG761524168
CUT CORNERED RECT. MODIFIED BRILLIANT
8.50 X 6.17 X 4.28 MM
2.08 CARATS
FANCY VIVID PINK
VS 1
66.4%
69.4%
Thick
Pointed
Polish VERY GOOD
Symmetry VERY GOOD
Fluorescence SLIGHT
Inscription(s) IGI LG761524168

Comments: This Laboratory Grown Diamond was created by Chemical Vapor Deposition (CVD) growth process.
Indications of post-growth treatment.