



ELECTRONIC COPY

LABORATORY GROWN DIAMOND REPORT

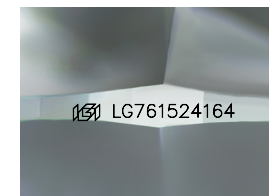
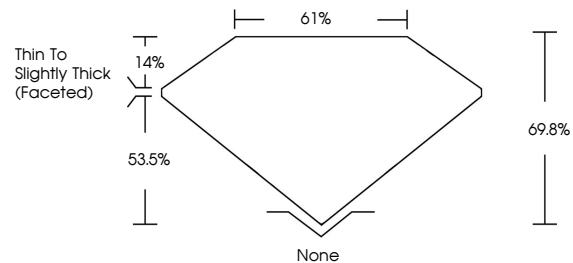
January 21, 2026
 IGI Report Number **LG761524164**
 Description **LABORATORY GROWN DIAMOND**
 Shape and Cutting Style **CUSHION MODIFIED BRILLIANT**
 Measurements **7.11 X 6.10 X 4.26 MM**
GRADING RESULTS
 Carat Weight **1.36 CARAT**
 Color Grade **FANCY VIVID GREEN**
 Clarity Grade **VS 1**

ADDITIONAL GRADING INFORMATION

Polish **EXCELLENT**
 Symmetry **VERY GOOD**
 Fluorescence **NONE**
 Inscription(s) **IGI LG761524164**

Comments: This Laboratory Grown Diamond was created by High Pressure High Temperature (HPHT) growth process. Indications of post-growth treatment.

PROPORTIONS



Sample Image Used

COLOR

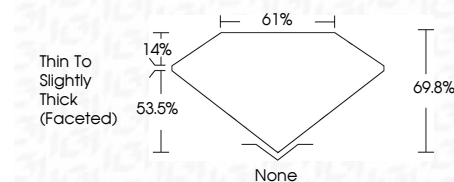
D E F G H I J Faint Very Light Light

CLARITY

| FL | IF | VS ¹⁻² | VS ¹⁻² | SI ¹⁻² | I ¹⁻³ |
|----------|---------------------|-----------------------------|------------------------|-------------------|------------------|
| Flawless | Internally Flawless | Very Very Slightly Included | Very Slightly Included | Slightly Included | Included |



January 21, 2026
 IGI Report Number **LG761524164**
 Description **LABORATORY GROWN DIAMOND**
 Shape and Cutting Style **CUSHION MODIFIED BRILLIANT**
 Measurements **7.11 X 6.10 X 4.26 MM**
GRADING RESULTS
 Carat Weight **1.36 CARAT**
 Color Grade **FANCY VIVID GREEN**
 Clarity Grade **VS 1**



ADDITIONAL GRADING INFORMATION

Polish **EXCELLENT**
 Symmetry **VERY GOOD**
 Fluorescence **NONE**
 Inscription(s) **IGI LG761524164**

Comments: This Laboratory Grown Diamond was created by High Pressure High Temperature (HPHT) growth process. Indications of post-growth treatment.



January 21, 2026
 IGI Report No LG761524164
CUSHION MODIFIED BRILLIANT
 7.11 X 6.10 X 4.26 MM
 1.36 CARAT
 Carat Weight
 Color Grade
 Clarity Grade
 Depth
 Table
 Girdle
 Thin To Slightly Thick (Faceted)
 None
 None
 EXCELLENT
 VERY GOOD
 NONE
 IGI LG761524164
 None
 EXCELLENT
 VERY GOOD
 NONE
 IGI LG761524164

Comments: This Laboratory Grown Diamond was created by High Pressure High Temperature (HPHT) growth process. Indications of post-growth treatment.