



ELECTRONIC COPY

LG761523890
Report verification at igi.org



January 21, 2026

IGI Report Number LG761523890

Description LABORATORY GROWN DIAMOND

Shape and Cutting Style CUT CORNERED RECTANGULAR MODIFIED BRILLIANT

Measurements 12.23 X 8.45 X 5.77 MM

GRADING RESULTS

Carat Weight 5.61 CARATS

Color Grade FANCY VIVID ORANGY PINK

Clarity Grade VS 1

LABORATORY GROWN DIAMOND REPORT

January 21, 2026

IGI Report Number LG761523890

Description LABORATORY GROWN DIAMOND

Shape and Cutting Style CUT CORNERED RECTANGULAR MODIFIED BRILLIANT

Measurements 12.23 X 8.45 X 5.77 MM

GRADING RESULTS

Carat Weight 5.61 CARATS

Color Grade FANCY VIVID ORANGY PINK

Clarity Grade VS 1

ADDITIONAL GRADING INFORMATION

Polish EXCELLENT

Symmetry EXCELLENT

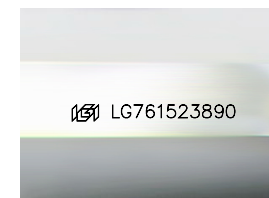
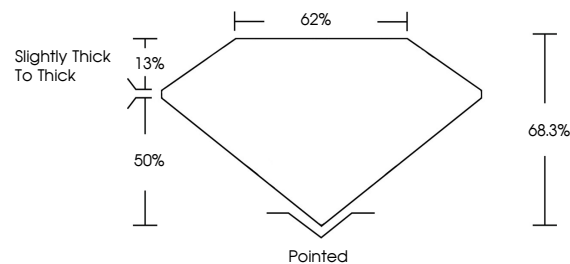
Fluorescence STRONG

Inscription(s) LG761523890

Comments: This Laboratory Grown Diamond was created by Chemical Vapor Deposition (CVD) growth process.

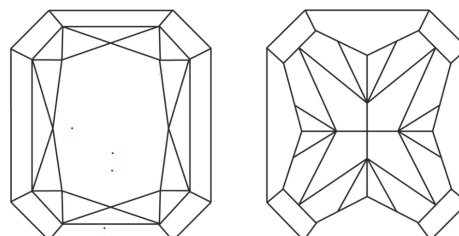
Indications of post-growth treatment.

PROPORTIONS



Sample Image Used

CLARITY CHARACTERISTICS



KEY TO SYMBOLS

Red symbols indicate internal characteristics. Green symbols indicate external characteristics.

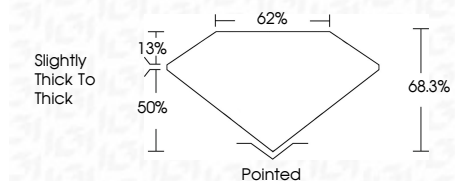
COLOR

D E F G H I J Faint Very Light Light

CLARITY

FL IF VS 1-2 VS 2-3 SI 1-2 I 1-3

Flawless Internally Flawless Very Very Slightly Included Very Slightly Included Slightly Included Included



ADDITIONAL GRADING INFORMATION

Polish EXCELLENT

Symmetry EXCELLENT

Fluorescence STRONG

Inscription(s) LG761523890

Comments: This Laboratory Grown Diamond was created by Chemical Vapor Deposition (CVD) growth process. Indications of post-growth treatment.



Summary of report details including date, report number, description, measurements, grading results, and additional information.