



ELECTRONIC COPY

LG761522062
Report verification at igi.org



January 11, 2026
IGI Report Number **LG761522062**
Description **LABORATORY GROWN DIAMOND**
Shape and Cutting Style **EMERALD CUT**
Measurements **9.39 X 6.51 X 4.02 MM**
GRADING RESULTS
Carat Weight **2.50 CARATS**
Color Grade **FANCY INTENSE PINK**
Clarity Grade **VS 2**

LABORATORY GROWN DIAMOND REPORT

January 11, 2026
IGI Report Number **LG761522062**
Description **LABORATORY GROWN DIAMOND**
Shape and Cutting Style **EMERALD CUT**
Measurements **9.39 X 6.51 X 4.02 MM**

GRADING RESULTS

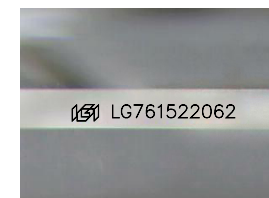
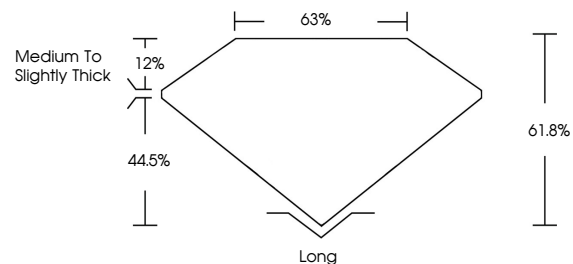
Carat Weight **2.50 CARATS**
Color Grade **FANCY INTENSE PINK**
Clarity Grade **VS 2**

ADDITIONAL GRADING INFORMATION

Polish **EXCELLENT**
Symmetry **EXCELLENT**
Fluorescence **SLIGHT**
Inscription(s) **LG761522062**

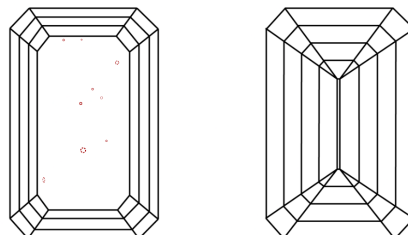
Comments: This Laboratory Grown Diamond was created by Chemical Vapor Deposition (CVD) growth process. Indications of post-growth treatment.

PROPORTIONS



Sample Image Used

CLARITY CHARACTERISTICS



KEY TO SYMBOLS

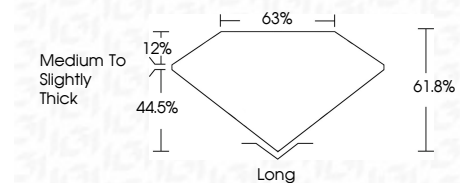
Red symbols indicate internal characteristics.
Green symbols indicate external characteristics.

COLOR

D E F G H I J Faint Very Light Light

CLARITY

FL	IF	VS ¹⁻²	VS ¹⁻²	SI ¹⁻²	I ¹⁻³
Flawless	Internally Flawless	Very Very Slightly Included	Very Slightly Included	Slightly Included	Included



ADDITIONAL GRADING INFORMATION

Polish **EXCELLENT**
Symmetry **EXCELLENT**
Fluorescence **SLIGHT**
Inscription(s) **LG761522062**
Comments: This Laboratory Grown Diamond was created by Chemical Vapor Deposition (CVD) growth process. Indications of post-growth treatment.



January 11, 2026
IGI Report No **LG761522062**
EMERALD CUT
2.50 CARATS
Carat Weight **FANCY INTENSE PINK**
Color Grade **VS 2**
Clarity Grade **61.8%**
Table **63%**
Girdle **Medium to Slightly Thick**
Culet **Long**
Polish **EXCELLENT**
Symmetry **EXCELLENT**
Fluorescence **SLIGHT**
Inscription(s) **LG761522062**
Comments: This Laboratory Grown Diamond was created by Chemical Vapor Deposition (CVD) growth process. Indications of post-growth treatment.