



**ELECTRONIC COPY**

LG761519757  
Report verification at igi.org



December 29, 2025

IGI Report Number **LG761519757**

Description **LABORATORY GROWN DIAMOND**

Shape and Cutting Style **CUT CORNERED  
RECTANGULAR MODIFIED  
BRILLIANT**

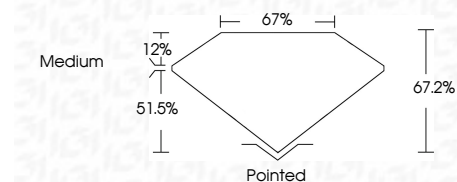
Measurements **10.08 X 7.26 X 4.88 MM**

**GRADING RESULTS**

Carat Weight **3.08 CARATS**

Color Grade **G**

Clarity Grade **VS 1**



**ADDITIONAL GRADING INFORMATION**

Polish **EXCELLENT**

Symmetry **EXCELLENT**

Fluorescence **NONE**

Inscription(s) **IGI LG761519757**

Comments: This Laboratory Grown Diamond was created by Chemical Vapor Deposition (CVD) growth process. Type IIa



December 29, 2025  
IGI Report No LG761519757  
CUT CORNERED RECT. MODIFIED BRILLIANT  
10.08 X 7.26 X 4.88 MM  
3.08 CARATS  
G  
VS 1  
51.5%  
67%  
Medium  
Pointed  
EXCELLENT  
EXCELLENT  
NONE  
IGI LG761519757  
Comments: This Laboratory Grown Diamond was created by Chemical Vapor Deposition (CVD) growth process. Type IIa

December 29, 2025

IGI Report Number **LG761519757**

Description **LABORATORY GROWN DIAMOND**

Shape and Cutting Style **CUT CORNERED RECTANGULAR  
MODIFIED BRILLIANT**

Measurements **10.08 X 7.26 X 4.88 MM**

**GRADING RESULTS**

Carat Weight **3.08 CARATS**

Color Grade **G**

Clarity Grade **VS 1**

**ADDITIONAL GRADING INFORMATION**

Polish **EXCELLENT**

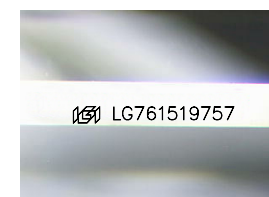
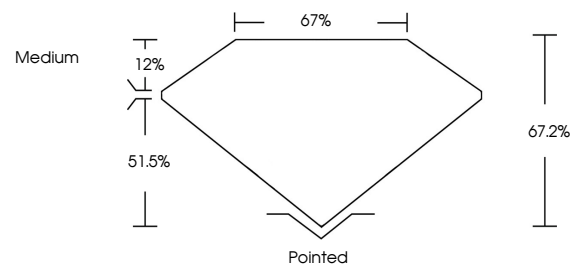
Symmetry **EXCELLENT**

Fluorescence **NONE**

Inscription(s) **IGI LG761519757**

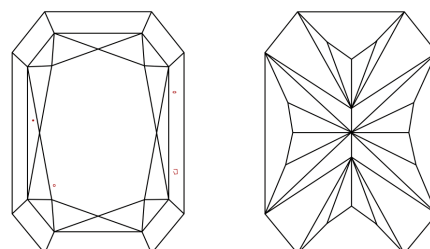
Comments: This Laboratory Grown Diamond was created by Chemical Vapor Deposition (CVD) growth process. Type IIa

**PROPORTIONS**



Sample Image Used

**CLARITY CHARACTERISTICS**



**KEY TO SYMBOLS**

Red symbols indicate internal characteristics.  
Green symbols indicate external characteristics.

**COLOR**

D E F G H I J Faint Very Light Light

**CLARITY**

FL	IF	VS <sup>1-2</sup>	VS <sup>1-2</sup>	SI <sup>1-2</sup>	I <sup>1-3</sup>
Flawless	Internally Flawless	Very Very Slightly Included	Very Slightly Included	Slightly Included	Included

