



**INTERNATIONAL
GEMOLOGICAL
INSTITUTE**

ELECTRONIC COPY

LG761519352
Report verification at igi.org

LABORATORY GROWN DIAMOND REPORT



December 29, 2025

IGI Report Number **LG761519352**Description **LABORATORY GROWN DIAMOND**Shape and Cutting Style **OVAL BRILLIANT**

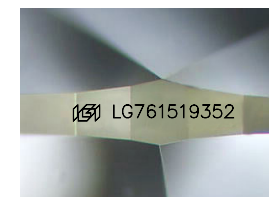
Measurements 9.96 X 6.95 X 4.41 MM

GRADING RESULTS

Carat Weight 1.97 CARAT

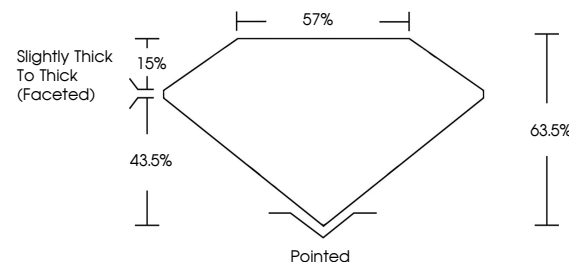
Color Grade G

Clarity Grade VS 1

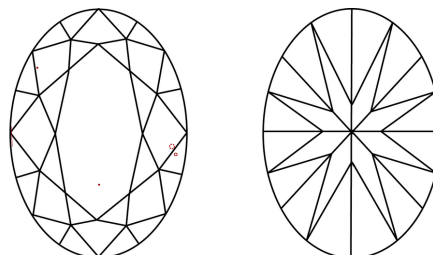


Sample Image Used

PROPORTIONS



CLARITY CHARACTERISTICS



KEY TO SYMBOLS

Red symbols indicate internal characteristics.
Green symbols indicate external characteristics.

COLOR

D E F G H I J Faint Very Light Light

CLARITY

FL IF WS¹⁻² VS¹⁻² SI¹⁻² |¹⁻³

Flawless	Internally Flawless	Very Very Slightly Included	Very Slightly Included	Slightly Included	Included
----------	---------------------	-----------------------------	------------------------	-------------------	----------

ADDITIONAL GRADING INFORMATION

Polish EXCELLENCE

Symmetry **EXCELLENCE**Fluorescence NONInscription(s) LG76151935

Comments: This Laboratory Grown Diamond was created by Chemical Vapor Deposition (CVD) growth process.
Type IIa



© IGI 2020, International Gemological Institute

FD - 10 20

www.igi.org

THIS DOCUMENT WAS PRODUCED WITH THE FOLLOWING SECURITY MEASURES: SPECIAL DOCUMENT PAPER, INK SCREENS, WATERMARK, BACKGROUND DESIGNS, HOLOGRAM AND OTHER SECURITY FEATURES NOT LISTED AND DO EXCEED DOCUMENT SECURITY INDUSTRY GUIDELINES

December 29, 2025
GJ Report No 1G761519352

Report No. 27-2227	Carat Weight	VS 1	1.97 CARAT
GI Report No. 6751519362	Color Grade	G	
CYAL BRILLIANT	Depth	65.6%	Slightly Thick to Thick (Faceted)
9.96 X 6.95 X 4.41 MM	Table	57%	
	Grain		Pointed
	Color		EXCELLENT
			EXCELLENT
			NONE
			Report 6751519362

Comments:
This Laboratory Grown Diamond was
created by Chemical Vapor Deposition
(CVD) growth process.