



**ELECTRONIC COPY**

LG761518770  
Report verification at igi.org



January 5, 2026

IGI Report Number **LG761518770**

Description **LABORATORY GROWN DIAMOND**

Shape and Cutting Style **SQUARE EMERALD CUT**

Measurements **5.56 X 5.55 X 3.62 MM**

**GRADING RESULTS**

Carat Weight **1.07 CARAT**

Color Grade **FANCY INTENSE BLUE**

Clarity Grade **VVS 2**

January 5, 2026  
IGI Report Number **LG761518770**  
Description **LABORATORY GROWN DIAMOND**  
Shape and Cutting Style **SQUARE EMERALD CUT**  
Measurements **5.56 X 5.55 X 3.62 MM**

**GRADING RESULTS**

Carat Weight **1.07 CARAT**

Color Grade **FANCY INTENSE BLUE**

Clarity Grade **VVS 2**

**ADDITIONAL GRADING INFORMATION**

Polish **EXCELLENT**

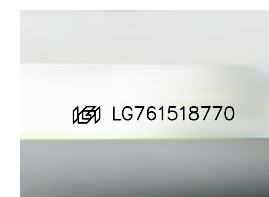
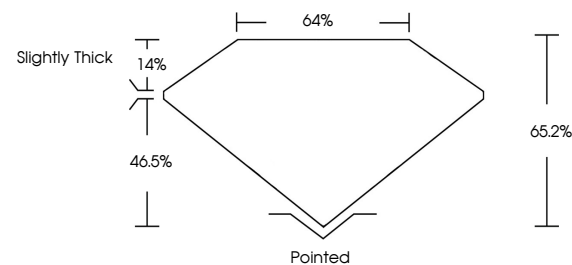
Symmetry **EXCELLENT**

Fluorescence **NONE**

Inscription(s) **IGI LG761518770**

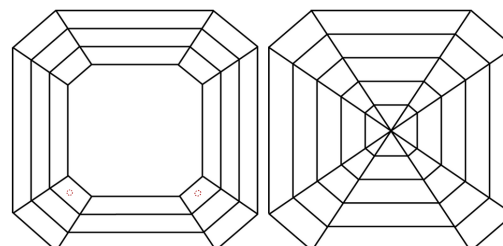
Comments: This Laboratory Grown Diamond was created by High Pressure High Temperature (HPHT) growth process. Indications of post-growth treatment.

**PROPORTIONS**



Sample Image Used

**CLARITY CHARACTERISTICS**



**KEY TO SYMBOLS**

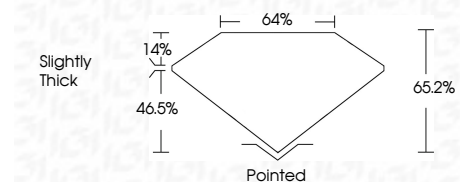
Red symbols indicate internal characteristics.  
Green symbols indicate external characteristics.

**COLOR**

D E F G H I J Faint Very Light Light

**CLARITY**

FL	IF	VVS <sup>1-2</sup>	VS <sup>1-2</sup>	SI <sup>1-2</sup>	I <sup>1-3</sup>
Flawless	Internally Flawless	Very Very Slightly Included	Very Slightly Included	Slightly Included	Included



**ADDITIONAL GRADING INFORMATION**

Polish **EXCELLENT**

Symmetry **EXCELLENT**

Fluorescence **NONE**

Inscription(s) **IGI LG761518770**

Comments: This Laboratory Grown Diamond was created by High Pressure High Temperature (HPHT) growth process. Indications of post-growth treatment.



**IGI**



January 5, 2026  
IGI Report No LG761518770  
**SQUARE EMERALD CUT**  
1.07 CARAT  
FANCY INTENSE BLUE  
VVS 2  
5.56 X 5.55 X 3.62 MM  
65.2%  
14%  
46.5%  
Slightly Thick  
Pointed  
EXCELLENT  
EXCELLENT  
NONE  
IGI LG761518770  
Comments: This Laboratory Grown Diamond was created by High Pressure High Temperature (HPHT) growth process. Indications of post-growth treatment.