



**ELECTRONIC COPY**

## LABORATORY GROWN DIAMOND REPORT

|                         |                          |
|-------------------------|--------------------------|
| January 3, 2026         |                          |
| IGI Report Number       | LG761518221              |
| Description             | LABORATORY GROWN DIAMOND |
| Shape and Cutting Style | ROUND BRILLIANT          |
| Measurements            | 8.07 - 8.11 X 4.99 MM    |
| GRADING RESULTS         |                          |
| Carat Weight            | 2.03 CARATS              |
| Color Grade             | E                        |
| Clarity Grade           | VVS 2                    |
| Cut Grade               | IDEAL                    |

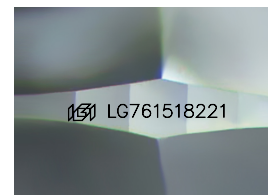
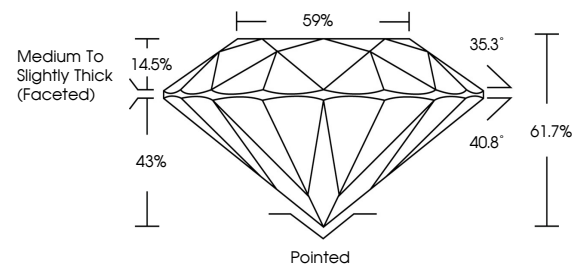
### ADDITIONAL GRADING INFORMATION

|                |                 |
|----------------|-----------------|
| Polish         | EXCELLENT       |
| Symmetry       | EXCELLENT       |
| Fluorescence   | NONE            |
| Inscription(s) | 151 LG761518221 |

Comments: This Laboratory Grown Diamond was created by Chemical Vapor Deposition (CVD) growth process. Type IIa

LG761518221  
Report verification at [igi.org](https://igi.org)

## PROPORTIONS



Sample Image Used

## COLOR

D E F G H I J Faint Very Light Light

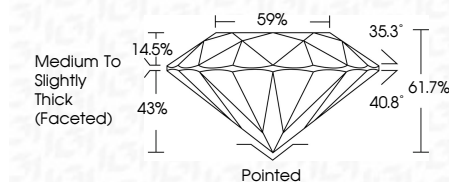
## CLARITY

| FL       | IF                  | VVS <sup>1-2</sup>          | VS <sup>1-2</sup>      | SI <sup>1-2</sup> | I <sup>1-3</sup> |
|----------|---------------------|-----------------------------|------------------------|-------------------|------------------|
| Flawless | Internally Flawless | Very Very Slightly Included | Very Slightly Included | Slightly Included | Included         |

## LABORATORY GROWN DIAMOND REPORT



|                         |                          |
|-------------------------|--------------------------|
| January 3, 2026         |                          |
| IGI Report Number       | LG761518221              |
| Description             | LABORATORY GROWN DIAMOND |
| Shape and Cutting Style | ROUND BRILLIANT          |
| Measurements            | 8.07 - 8.11 X 4.99 MM    |
| GRADING RESULTS         |                          |
| Carat Weight            | 2.03 CARATS              |
| Color Grade             | E                        |
| Clarity Grade           | VVS 2                    |
| Cut Grade               | IDEAL                    |



### ADDITIONAL GRADING INFORMATION

|   |   |
|---|---|
| Polish  | EXCELLENT   |
| Symmetry  | EXCELLENT   |
| Fluorescence  | NONE  |
| Inscription(s)  |  LG761518221 |
| Comments: This Laboratory Grown Diamond was created by Chemical Vapor Deposition (CVD) growth process. Type IIa |   |



© IGI 2020, International Gemological Institute

FD - 10 20



THIS DOCUMENT WAS PRODUCED WITH THE FOLLOWING SECURITY MEASURES: SPECIAL DOCUMENT PAPER, INK SCREENS, WATERMARK, BACKGROUND DESIGNS, HOLOGRAM AND OTHER SECURITY FEATURES NOT LISTED AND DO EXCEED DOCUMENT SECURITY INDUSTRY GUIDELINES



All certified diamonds come with an individual certificate, **ONLY** available at an accredited retailer

SCS GLOBAL SERVICES

FOR THE SUSTAINABILITY RATED CERTIFICATE, SCAN HERE →

**www.igi.org**

January 3, 2026  
GI Report No LG761518221

|                        |                        |               |                                    |     |
|------------------------|------------------------|---------------|------------------------------------|-----|
| Report No. ZG161518221 | ROUND BRILLIANT        |               | 2.03 CARATS                        |     |
|                        | 10.07 - 8.11 X 5.99 MM |               | E                                  |     |
|                        | Color                  | Weight        | VVS 2                              |     |
|                        | Color Grade            | Clarity Grade | IDEAL                              |     |
|                        | Cut Grade              | Depth         | 61.7%                              | 59% |
| Table                  |                        |               | Medium to Slightly Thick (Faceted) |     |
| Girdle                 |                        |               | Pointed                            |     |
| Culet                  |                        |               | EXCELLENT                          |     |
| Polish                 |                        |               | EXCELLENT                          |     |
| Symmetry               |                        |               | NONE                               |     |
| Fluorescence           |                        |               | see ZG161518221                    |     |
| Inscriptions           |                        |               |                                    |     |

**Comments:**  
This Laboratory Grown Diamond was  
created by Chemical Vapor Deposition