



ELECTRONIC COPY

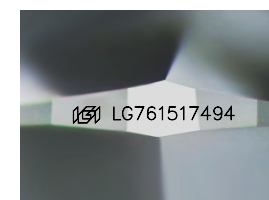
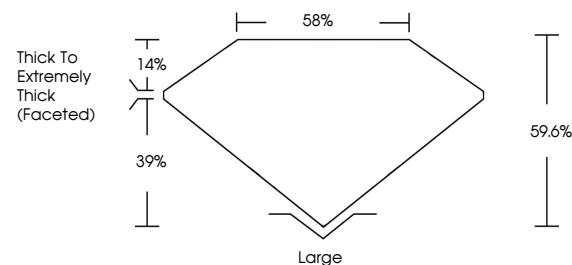
LG761517494
Report verification at igi.org



February 24, 2026
IGI Report Number **LG761517494**
Description **LABORATORY GROWN DIAMOND**
Shape and Cutting Style **SQUARE CUSHION MODIFIED BRILLIANT**
Measurements **13.02 X 11.80 X 7.03 MM**
GRADING RESULTS
Carat Weight **10.08 CARATS**
Color Grade **FANCY INTENSE GREEN**
Clarity Grade **VS 2**

February 24, 2026
IGI Report Number **LG761517494**
Description **LABORATORY GROWN DIAMOND**
Shape and Cutting Style **SQUARE CUSHION MODIFIED BRILLIANT**
Measurements **13.02 X 11.80 X 7.03 MM**

PROPORTIONS

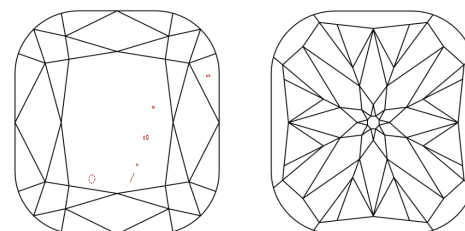


Sample Image Used

GRADING RESULTS

Carat Weight **10.08 CARATS**
Color Grade **FANCY INTENSE GREEN**
Clarity Grade **VS 2**

CLARITY CHARACTERISTICS



KEY TO SYMBOLS

Red symbols indicate internal characteristics.
Green symbols indicate external characteristics.

ADDITIONAL GRADING INFORMATION

Polish **EXCELLENT**
Symmetry **EXCELLENT**
Fluorescence **NONE**
Inscription(s) **IGI LG761517494**

Comments: This Laboratory Grown Diamond was created by Chemical Vapor Deposition (CVD) growth process.
Indications of post-growth treatment.

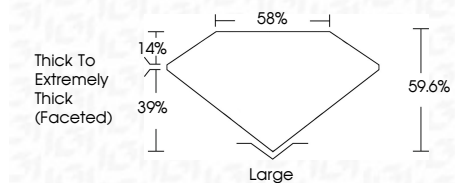
Secondary color: Blue

COLOR

D E F G H I J Faint Very Light Light

CLARITY

FL	IF	VS ¹⁻²	VS ¹⁻²	SI ¹⁻²	I ¹⁻³
Flawless	Internally Flawless	Very Very Slightly Included	Very Slightly Included	Slightly Included	Included



ADDITIONAL GRADING INFORMATION

Polish **EXCELLENT**
Symmetry **EXCELLENT**
Fluorescence **NONE**
Inscription(s) **IGI LG761517494**
Comments: This Laboratory Grown Diamond was created by Chemical Vapor Deposition (CVD) growth process.
Indications of post-growth treatment.
Secondary color: Blue



February 24, 2026
IGI Report No LG761517494
SQUARE CUSHION MODIFIED BRILLIANT
13.02 X 11.80 X 7.03 MM
10.08 CARATS
FANCY INTENSE GREEN
VS 2
69.6%
39%
Thick To Extremely Thick (Faceted)
Large
EXCELLENT
EXCELLENT
NONE
IGI LG761517494
Comments: This Laboratory Grown Diamond was created by Chemical Vapor Deposition (CVD) growth process.
Indications of post-growth treatment.
Secondary color: Blue