



ELECTRONIC COPY

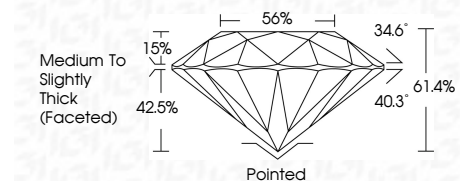
LG761516647
Report verification at igi.org



January 17, 2026
IGI Report Number LG761516647
Description LABORATORY GROWN DIAMOND
Shape and Cutting Style ROUND BRILLIANT
Measurements 9.29 - 9.33 X 5.72 MM

GRADING RESULTS

Carat Weight 3.07 CARATS
Color Grade E
Clarity Grade VVS 2
Cut Grade IDEAL



ADDITIONAL GRADING INFORMATION

Polish EXCELLENT
Symmetry EXCELLENT
Fluorescence NONE
Inscription(s) IGI LG761516647
Comments: This Laboratory Grown Diamond was created by Chemical Vapor Deposition (CVD) growth process. Type IIa



January 17, 2026
IGI Report No LG761516647
ROUND BRILLIANT
3.07 CARATS E
9.29 - 9.33 X 5.72 MM
Color Grade VVS 2
Clarity Grade IDEAL
Depth 61.4%
Table 56%
Medium To Slightly Thick (Faceted)
Cutler Pointed
Polish EXCELLENT
Symmetry EXCELLENT
Fluorescence NONE
Inscriptions(s) IGI LG761516647
Comments: This Laboratory Grown Diamond was created by Chemical Vapor Deposition (CVD) growth process. Type IIa

January 17, 2026
IGI Report Number LG761516647
Description LABORATORY GROWN DIAMOND
Shape and Cutting Style ROUND BRILLIANT
Measurements 9.29 - 9.33 X 5.72 MM

GRADING RESULTS

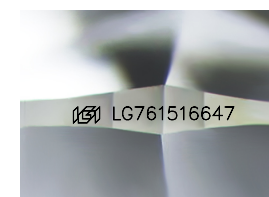
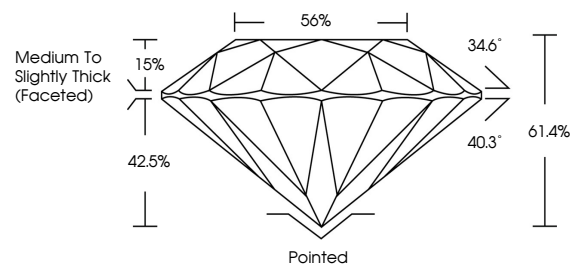
Carat Weight 3.07 CARATS
Color Grade E
Clarity Grade VVS 2
Cut Grade IDEAL

ADDITIONAL GRADING INFORMATION

Polish EXCELLENT
Symmetry EXCELLENT
Fluorescence NONE
Inscription(s) IGI LG761516647

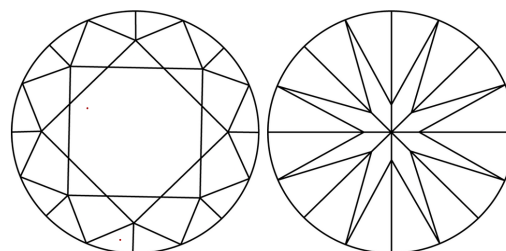
Comments: This Laboratory Grown Diamond was created by Chemical Vapor Deposition (CVD) growth process. Type IIa

PROPORTIONS



Sample Image Used

CLARITY CHARACTERISTICS



KEY TO SYMBOLS

Red symbols indicate internal characteristics.
Green symbols indicate external characteristics.

COLOR

D E F G H I J Faint Very Light Light

CLARITY

FL IF VVS 1-2 VS 1-2 SI 1-2 I 1-3
Flawless Internally Flawless Very Very Slightly Included Very Slightly Included Slightly Included Included

