



ELECTRONIC COPY

LG761513596
Report verification at igi.org



January 15, 2026
IGI Report Number **LG761513596**
Description **LABORATORY GROWN DIAMOND**
Shape and Cutting Style **CUT CORNERED SQUARE
MODIFIED BRILLIANT**
Measurements **8.62 X 8.46 X 5.80 MM**
GRADING RESULTS
Carat Weight **4.08 CARATS**
Color Grade **E**
Clarity Grade **VS 1**

LABORATORY GROWN DIAMOND REPORT

January 15, 2026
IGI Report Number **LG761513596**
Description **LABORATORY GROWN DIAMOND**
Shape and Cutting Style **CUT CORNERED SQUARE
MODIFIED BRILLIANT**
Measurements **8.62 X 8.46 X 5.80 MM**

GRADING RESULTS

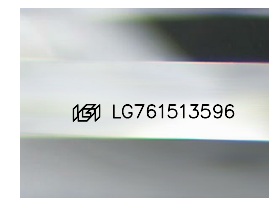
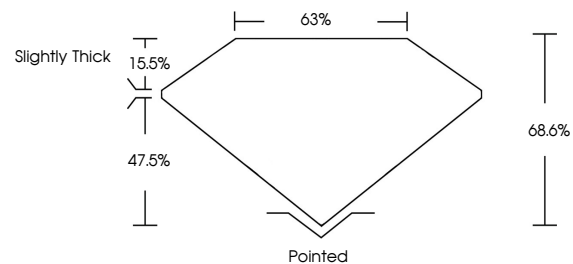
Carat Weight **4.08 CARATS**
Color Grade **E**
Clarity Grade **VS 1**

ADDITIONAL GRADING INFORMATION

Polish **EXCELLENT**
Symmetry **EXCELLENT**
Fluorescence **NONE**
Inscription(s) **IGI LG761513596**

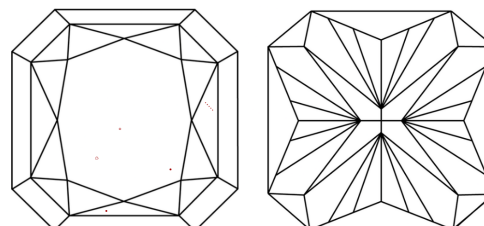
Comments: This Laboratory Grown Diamond was created by Chemical Vapor Deposition (CVD) growth process.
Type IIa

PROPORTIONS



Sample Image Used

CLARITY CHARACTERISTICS



KEY TO SYMBOLS

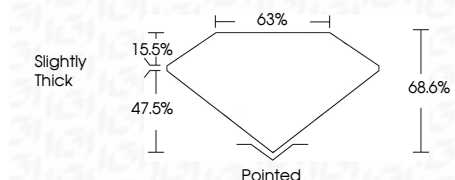
Red symbols indicate internal characteristics.
Green symbols indicate external characteristics.

COLOR

D E F G H I J Faint Very Light Light

CLARITY

FL	IF	VS ¹⁻²	VS ¹⁻²	SI ¹⁻²	I ¹⁻³
Flawless	Internally Flawless	Very Very Slightly Included	Very Slightly Included	Slightly Included	Included



ADDITIONAL GRADING INFORMATION

Polish **EXCELLENT**
Symmetry **EXCELLENT**
Fluorescence **NONE**
Inscription(s) **IGI LG761513596**
Comments: This Laboratory Grown Diamond was created by Chemical Vapor Deposition (CVD) growth process.
Type IIa



IGI



January 15, 2026
IGI Report No **LG761513596**
CUT CORNERED SQUARE MODIFIED BRILLIANT
8.62 X 8.46 X 5.80 MM
Carat Weight **4.08 CARATS**
Color Grade **E**
Clarity Grade **VS 1**
Table **63%**
Depth **68.6%**
Girdle **Slightly Thick**
Culet **Pointed**
Polish **EXCELLENT**
Symmetry **EXCELLENT**
Fluorescence **NONE**
Inscription(s) **IGI LG761513596**
Comments: This Laboratory Grown Diamond was created by Chemical Vapor Deposition (CVD) growth process.
Type IIa