



ELECTRONIC COPY

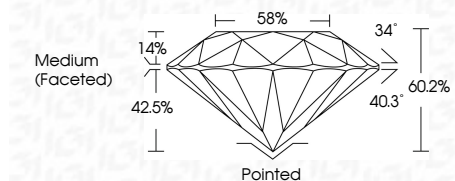
LG761513306 Report verification at igi.org



January 18, 2026 IGI Report Number LG761513306 Description LABORATORY GROWN DIAMOND Shape and Cutting Style ROUND BRILLIANT Measurements 10.67 - 10.72 X 6.44 MM

GRADING RESULTS

Carat Weight 4.58 CARATS Color Grade E Clarity Grade VVS 2 Cut Grade IDEAL



ADDITIONAL GRADING INFORMATION

Polish EXCELLENT Symmetry EXCELLENT Fluorescence NONE Inscription(s) IGI LG761513306 Comments: This Laboratory Grown Diamond was created by Chemical Vapor Deposition (CVD) growth process. Type IIa



January 18, 2026 IGI Report No LG761513306 ROUND BRILLIANT 10.67 - 10.72 X 6.44 MM 4.58 CARATS E Color Grade VVS 2 IDEAL 60.2% 58% Medium (Faceted) Pointed EXCELLENT EXCELLENT NONE NONE IGI LG761513306 Comments: This Laboratory Grown Diamond was created by Chemical Vapor Deposition (CVD) growth process. Type IIa

January 18, 2026 IGI Report Number LG761513306 Description LABORATORY GROWN DIAMOND Shape and Cutting Style ROUND BRILLIANT Measurements 10.67 - 10.72 X 6.44 MM

GRADING RESULTS

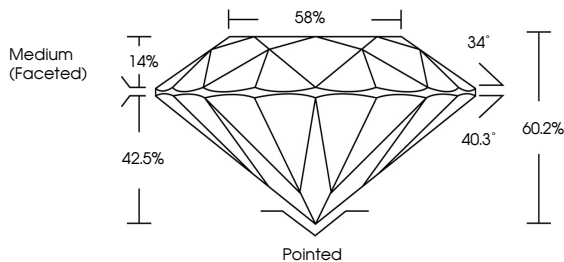
Carat Weight 4.58 CARATS Color Grade E Clarity Grade VVS 2 Cut Grade IDEAL

ADDITIONAL GRADING INFORMATION

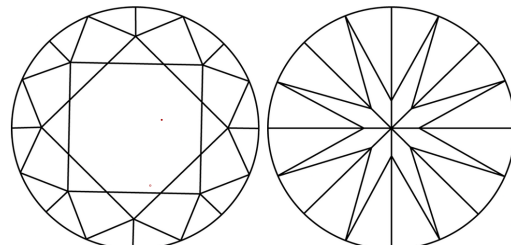
Polish EXCELLENT Symmetry EXCELLENT Fluorescence NONE Inscription(s) IGI LG761513306

Comments: This Laboratory Grown Diamond was created by Chemical Vapor Deposition (CVD) growth process. Type IIa

PROPORTIONS

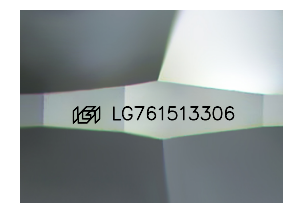


CLARITY CHARACTERISTICS



KEY TO SYMBOLS

Red symbols indicate internal characteristics. Green symbols indicate external characteristics.



Sample Image Used

COLOR

D E F G H I J Faint Very Light Light

CLARITY

FL IF VVS 1-2 VS 1-2 SI 1-2 I 1-3 Flawless Internally Flawless Very Very Slightly Included Very Slightly Included Slightly Included Included

