



ELECTRONIC COPY

LABORATORY GROWN DIAMOND REPORT

January 20, 2026
IGI Report Number LG761510173
Description LABORATORY GROWN DIAMOND
Shape and Cutting Style CUT CORNERED RECTANGULAR MODIFIED BRILLIANT
Measurements 8.05 X 5.69 X 3.88 MM

GRADING RESULTS

Carat Weight 1.52 CARAT
Color Grade G
Clarity Grade VS 1

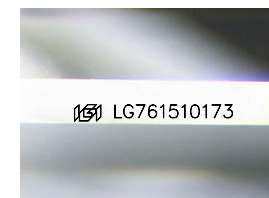
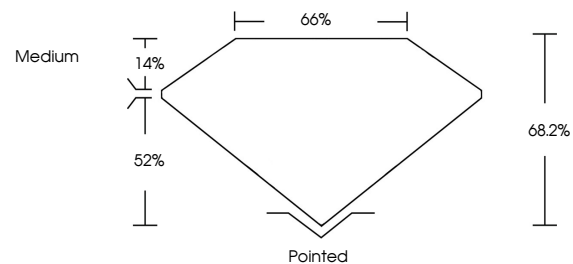
ADDITIONAL GRADING INFORMATION

Polish EXCELLENT
Symmetry EXCELLENT
Fluorescence NONE

Inscription(s) IGI LG761510173

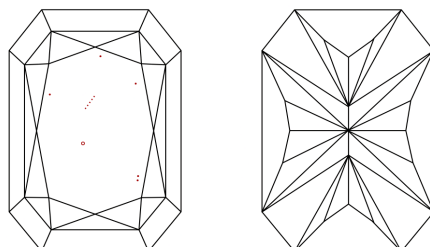
Comments: This Laboratory Grown Diamond was created by Chemical Vapor Deposition (CVD) growth process.
Type IIa

PROPORTIONS



Sample Image Used

CLARITY CHARACTERISTICS



KEY TO SYMBOLS

Red symbols indicate internal characteristics.
Green symbols indicate external characteristics.

COLOR

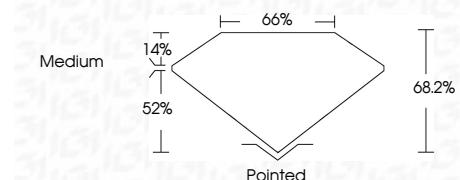
D E F G H I J Faint Very Light Light

CLARITY

FL IF VS¹⁻² VS¹⁻² SI¹⁻² I¹⁻³
Flawless Internally Flawless Very Very Slightly Included Very Slightly Included Slightly Included Included



January 20, 2026
IGI Report Number LG761510173
Description LABORATORY GROWN DIAMOND
Shape and Cutting Style CUT CORNERED RECTANGULAR MODIFIED BRILLIANT
Measurements 8.05 X 5.69 X 3.88 MM
GRADING RESULTS
Carat Weight 1.52 CARAT
Color Grade G
Clarity Grade VS 1



ADDITIONAL GRADING INFORMATION

Polish EXCELLENT
Symmetry EXCELLENT
Fluorescence NONE
Inscription(s) IGI LG761510173
Comments: This Laboratory Grown Diamond was created by Chemical Vapor Deposition (CVD) growth process.
Type IIa



January 20, 2026
IGI Report No LG761510173
CUT CORNERED RECT. MODIFIED BRILLIANT
8.05 X 5.69 X 3.88 MM
Carat Weight 1.52 CARAT
Color Grade G
Clarity Grade VS 1
Depth 68.2%
Table 14%
Girdle 65%
Medium
Culet Pointed
Polish EXCELLENT
Symmetry EXCELLENT
Fluorescence NONE
Inscription(s) IGI LG761510173
Comments: This Laboratory Grown Diamond was created by Chemical Vapor Deposition (CVD) growth process.
Type IIa