



ELECTRONIC COPY

LG761506541
Report verification at igi.org



January 10, 2026

IGI Report Number **LG761506541**

Description **LABORATORY GROWN DIAMOND**

Shape and Cutting Style **EMERALD CUT**

Measurements **9.49 X 6.77 X 4.77 MM**

GRADING RESULTS

Carat Weight **3.00 CARATS**

Color Grade **FANCY VIVID BLUE**

Clarity Grade **VS 1**

January 10, 2026
IGI Report Number **LG761506541**
Description **LABORATORY GROWN DIAMOND**
Shape and Cutting Style **EMERALD CUT**
Measurements **9.49 X 6.77 X 4.77 MM**

GRADING RESULTS

Carat Weight **3.00 CARATS**

Color Grade **FANCY VIVID BLUE**

Clarity Grade **VS 1**

ADDITIONAL GRADING INFORMATION

Polish **EXCELLENT**

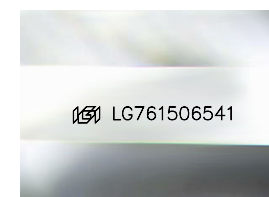
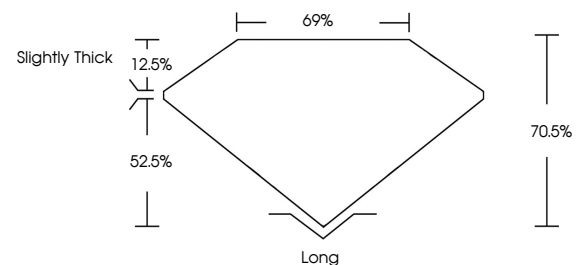
Symmetry **EXCELLENT**

Fluorescence **NONE**

Inscription(s) **IGI LG761506541**

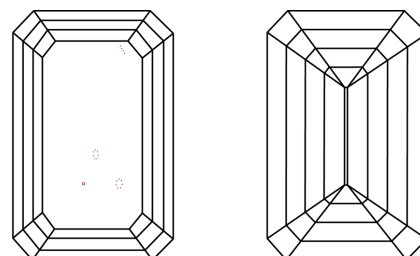
Comments: This Laboratory Grown Diamond was created by Chemical Vapor Deposition (CVD) growth process. Indications of post-growth treatment.

PROPORTIONS



Sample Image Used

CLARITY CHARACTERISTICS



KEY TO SYMBOLS

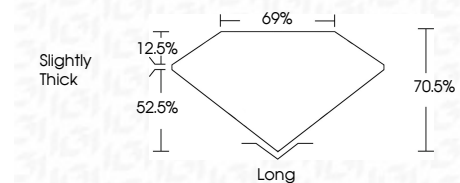
Red symbols indicate internal characteristics.
Green symbols indicate external characteristics.

COLOR

D E F G H I J Faint Very Light Light

CLARITY

FL	IF	VS ¹⁻²	VS ¹⁻²	SI ¹⁻²	I ¹⁻³
Flawless	Internally Flawless	Very Very Slightly Included	Very Slightly Included	Slightly Included	Included



ADDITIONAL GRADING INFORMATION

Polish **EXCELLENT**

Symmetry **EXCELLENT**

Fluorescence **NONE**

Inscription(s) **IGI LG761506541**

Comments: This Laboratory Grown Diamond was created by Chemical Vapor Deposition (CVD) growth process. Indications of post-growth treatment.



January 10, 2026
IGI Report No LG761506541
EMERALD CUT

3.00 CARATS
Carat Weight
FANCY VIVID BLUE
Color Grade

VS 1
Clarity Grade

9.49 X 6.77 X 4.77 MM
Depth
69%
Table
Slightly Thick
Girdle

Long
Culet
EXCELLENT
Polish
EXCELLENT
Symmetry
NONE
Fluorescence
Inscription(s)
IGI LG761506541

Comments: This Laboratory Grown Diamond was created by Chemical Vapor Deposition (CVD) growth process. Indications of post-growth treatment.