



ELECTRONIC COPY

LABORATORY GROWN DIAMOND REPORT

January 26, 2026  
 IGI Report Number **LG761504416**  
 Description **LABORATORY GROWN DIAMOND**  
 Shape and Cutting Style **ROUND BRILLIANT**  
 Measurements **9.30 - 9.34 X 5.83 MM**

**GRADING RESULTS**

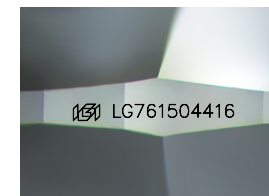
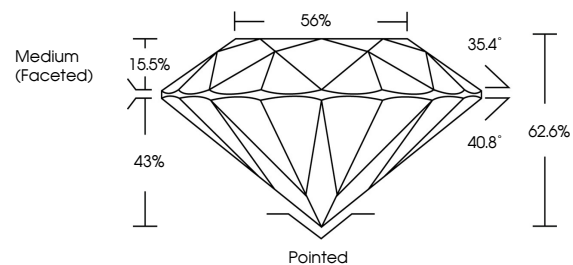
Carat Weight **3.13 CARATS**  
 Color Grade **F**  
 Clarity Grade **VVS 2**  
 Cut Grade **EXCELLENT**

ADDITIONAL GRADING INFORMATION

Polish **EXCELLENT**  
 Symmetry **EXCELLENT**  
 Fluorescence **NONE**  
 Inscription(s) **LG761504416**

Comments: HEARTS & ARROWS  
 As Grown - No indication of post-growth treatment.  
 This Laboratory Grown Diamond was created by High Pressure High Temperature (HPHT) growth process.  
 Type II

PROPORTIONS



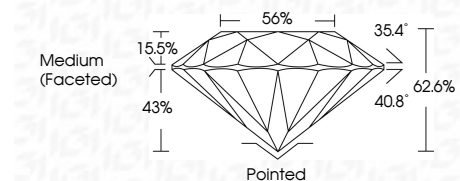
Sample Image Used



January 26, 2026  
 IGI Report Number **LG761504416**  
 Description **LABORATORY GROWN DIAMOND**  
 Shape and Cutting Style **ROUND BRILLIANT**  
 Measurements **9.30 - 9.34 X 5.83 MM**

**GRADING RESULTS**

Carat Weight **3.13 CARATS**  
 Color Grade **F**  
 Clarity Grade **VVS 2**  
 Cut Grade **EXCELLENT**



COLOR

D E F G H I J Faint Very Light Light

CLARITY

FL	IF	VVS <sup>1-2</sup>	VS <sup>1-2</sup>	SI <sup>1-2</sup>	I <sup>1-3</sup>
Flawless	Internally Flawless	Very Very Slightly Included	Very Slightly Included	Slightly Included	Included

ADDITIONAL GRADING INFORMATION

Polish **EXCELLENT**  
 Symmetry **EXCELLENT**  
 Fluorescence **NONE**  
 Inscription(s) **LG761504416**

Comments: HEARTS & ARROWS  
 As Grown - No indication of post-growth treatment.  
 This Laboratory Grown Diamond was created by High Pressure High Temperature (HPHT) growth process.  
 Type II



IGI

January 26, 2026  
 IGI Report No **LG761504416**  
**ROUND BRILLIANT**  
**9.30 - 9.34 X 5.83 MM**  
 Carat Weight **3.13 CARATS**  
 Color Grade **F**  
 Clarity Grade **VVS 2**  
 Cut Grade **EXCELLENT**  
 Depth **62.6%**  
 Table **56%**  
 Girdle **Medium (Faceted)**

Culet **Pointed**  
 Polish **EXCELLENT**  
 Symmetry **EXCELLENT**  
 Fluorescence **NONE**  
 Inscription(s) **IGI LG761504416**

Comments: HEARTS & ARROWS  
 As Grown - No indication of post-growth treatment.  
 This Laboratory Grown Diamond was created by High Pressure High Temperature (HPHT) growth process.  
 Type II