



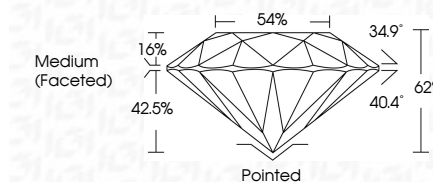
ELECTRONIC COPY

LG761504312
Report verification at igi.org



January 26, 2026
IGI Report Number **LG761504312**
Description **LABORATORY GROWN DIAMOND**
Shape and Cutting Style **ROUND BRILLIANT**
Measurements **8.05 - 8.09 X 5.01 MM**

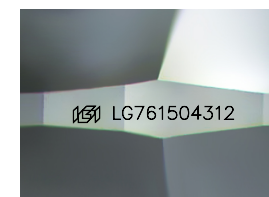
GRADING RESULTS
Carat Weight **2.00 CARATS**
Color Grade **E**
Clarity Grade **VVS 2**
Cut Grade **IDEAL**



ADDITIONAL GRADING INFORMATION
Polish **EXCELLENT**
Symmetry **EXCELLENT**
Fluorescence **NONE**
Inscription(s) **IGI LG761504312**
Comments: As Grown - No indication of post-growth treatment.
This Laboratory Grown Diamond was created by High Pressure High Temperature (HPHT) growth process.
Type II

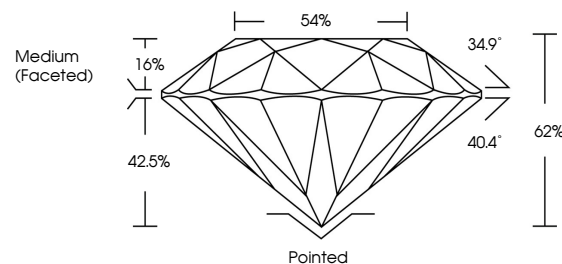


January 26, 2026
IGI Report No LG761504312
ROUND BRILLIANT
8.05 - 8.09 X 5.01 MM
2.00 CARATS
E
VVS 2
IDEAL
62%
54%
Medium (Faceted)
Pointed
EXCELLENT
EXCELLENT
NONE
IGI LG761504312
Comments: As Grown - No indication of post-growth treatment.
This Laboratory Grown Diamond was created by High Pressure High Temperature (HPHT) growth process.
Type II



Sample Image Used

PROPORTIONS



COLOR

D E F G H I J Faint Very Light Light

CLARITY

FL	IF	VS ¹⁻²	VS ¹⁻²	SI ¹⁻²	I ¹⁻³
Flawless	Internally Flawless	Very Very Slightly Included	Very Slightly Included	Slightly Included	Included

