



ELECTRONIC COPY

LG761501254 Report verification at igi.org



December 31, 2025 IGI Report Number LG761501254 Description LABORATORY GROWN DIAMOND Shape and Cutting Style ROUND BRILLIANT Measurements 6.72 - 6.78 X 4.24 MM GRADING RESULTS Carat Weight 1.20 CARAT Color Grade E Clarity Grade VS 1 Cut Grade EXCELLENT

December 31, 2025 IGI Report Number LG761501254 Description LABORATORY GROWN DIAMOND Shape and Cutting Style ROUND BRILLIANT Measurements 6.72 - 6.78 X 4.24 MM

GRADING RESULTS

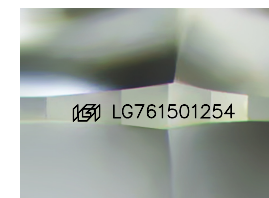
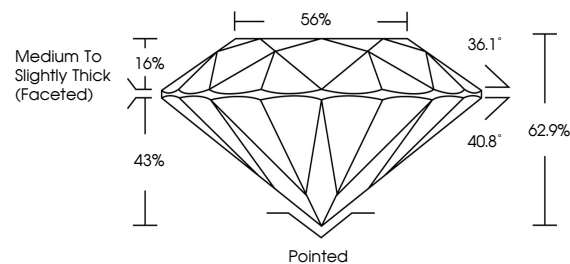
Carat Weight 1.20 CARAT Color Grade E Clarity Grade VS 1 Cut Grade EXCELLENT

ADDITIONAL GRADING INFORMATION

Polish EXCELLENT Symmetry EXCELLENT Fluorescence NONE Inscription(s) IGI LG761501254

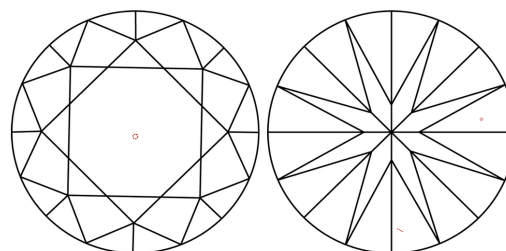
Comments: As Grown - No indication of post-growth treatment. This Laboratory Grown Diamond was created by High Pressure High Temperature (HPHT) growth process. Type II

PROPORTIONS



Sample Image Used

CLARITY CHARACTERISTICS



KEY TO SYMBOLS

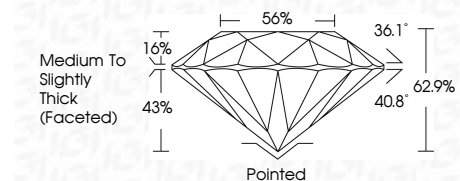
Red symbols indicate internal characteristics. Green symbols indicate external characteristics.

COLOR

D E F G H I J Faint Very Light Light

CLARITY

FL IF VS 1-2 VS 2-3 SI 1-2 I 1-3 Flawless Internally Flawless Very Very Slightly Included Very Slightly Included Slightly Included Included



ADDITIONAL GRADING INFORMATION

Polish EXCELLENT Symmetry EXCELLENT Fluorescence NONE Inscription(s) IGI LG761501254 Comments: As Grown - No indication of post-growth treatment. This Laboratory Grown Diamond was created by High Pressure High Temperature (HPHT) growth process. Type II



December 31, 2025 IGI Report No LG761501254 ROUND BRILLIANT 6.72 - 6.78 X 4.24 MM 1.20 CARAT E Color Grade EXCELLENT VS 1 Clarity Grade 62.9% Depth 56% Table Medium To Slightly Thick (Faceted) Pavilion Pointed EXCELLENT Crown Symmetry EXCELLENT Fluorescence NONE Inscriptions(s) IGI LG761501254 Comments: As Grown - No indication of post-growth treatment. This Laboratory Grown Diamond was created by High Pressure High Temperature (HPHT) growth process. Type II