



ELECTRONIC COPY

LG760599994
Report verification at igi.org



December 31, 2025

IGI Report Number **LG760599994**

Description **LABORATORY GROWN DIAMOND**

Shape and Cutting Style **ROUND BRILLIANT**

Measurements **6.75 - 6.78 X 4.28 MM**

GRADING RESULTS

Carat Weight **1.21 CARAT**

Color Grade **D**

Clarity Grade **VS 2**

Cut Grade **EXCELLENT**

December 31, 2025
IGI Report Number **LG760599994**
Description **LABORATORY GROWN DIAMOND**
Shape and Cutting Style **ROUND BRILLIANT**
Measurements **6.75 - 6.78 X 4.28 MM**

GRADING RESULTS

Carat Weight **1.21 CARAT**

Color Grade **D**

Clarity Grade **VS 2**

Cut Grade **EXCELLENT**

ADDITIONAL GRADING INFORMATION

Polish **EXCELLENT**

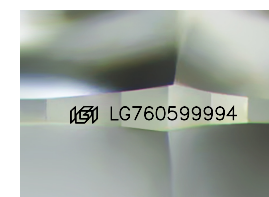
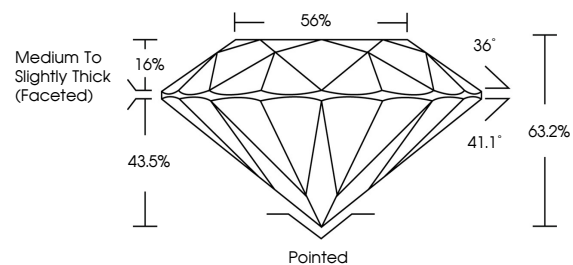
Symmetry **EXCELLENT**

Fluorescence **NONE**

Inscription(s) **IGI LG760599994**

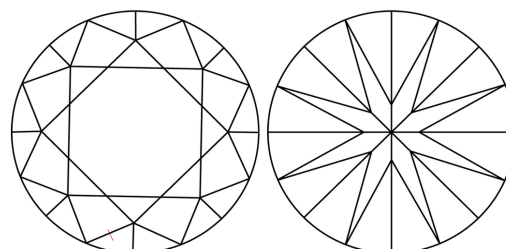
Comments: As Grown - No indication of post-growth treatment.
This Laboratory Grown Diamond was created by High Pressure High Temperature (HPHT) growth process.
Type II

PROPORTIONS



Sample Image Used

CLARITY CHARACTERISTICS



KEY TO SYMBOLS

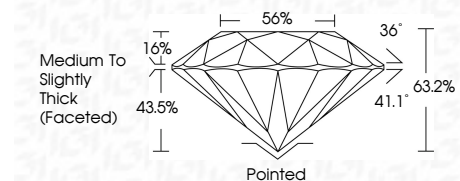
Red symbols indicate internal characteristics.
Green symbols indicate external characteristics.

COLOR

D E F G H I J Faint Very Light Light

CLARITY

| FL | IF | VS ¹⁻² | VS ¹⁻² | SI ¹⁻² | I ¹⁻³ |
|----------|---------------------|-----------------------------|------------------------|-------------------|------------------|
| Flawless | Internally Flawless | Very Very Slightly Included | Very Slightly Included | Slightly Included | Included |



ADDITIONAL GRADING INFORMATION

Polish **EXCELLENT**

Symmetry **EXCELLENT**

Fluorescence **NONE**

Inscription(s) **IGI LG760599994**

Comments: As Grown - No indication of post-growth treatment.
This Laboratory Grown Diamond was created by High Pressure High Temperature (HPHT) growth process.
Type II



IGI



| | | | | | | | | | | |
|---------------------------|-----------------------|-------------|---------------|-----------|-----------|-----------|-----------|-----------|-----------|-----------------|
| December 31, 2025 | 1.21 CARAT | D | VS 2 | 63.2% | 56% | Pointed | EXCELLENT | EXCELLENT | NONE | IGI LG760599994 |
| IGI Report No LG760599994 | 6.75 - 6.78 X 4.28 MM | Color Grade | Clarity Grade | Depth | Table | Girdle | Culet | Polish | Symmetry | Fluorescence |
| ROUND BRILLIANT | | EXCELLENT | EXCELLENT | EXCELLENT | EXCELLENT | EXCELLENT | EXCELLENT | EXCELLENT | EXCELLENT | EXCELLENT |
| | | | | | | | | | | |

Comments: As Grown - No indication of post-growth treatment.
This Laboratory Grown Diamond was created by High Pressure High Temperature (HPHT) growth process.
Type II