



ELECTRONIC COPY

LG760599838
Report verification at igi.org



January 1, 2026
IGI Report Number **LG760599838**
Description **LABORATORY GROWN DIAMOND**
Shape and Cutting Style **ROUND BRILLIANT**
Measurements **6.66 - 6.73 X 4.17 MM**
GRADING RESULTS
Carat Weight **1.18 CARAT**
Color Grade **D**
Clarity Grade **VVS 1**
Cut Grade **VERY GOOD**

January 1, 2026
IGI Report Number **LG760599838**
Description **LABORATORY GROWN DIAMOND**
Shape and Cutting Style **ROUND BRILLIANT**
Measurements **6.66 - 6.73 X 4.17 MM**

GRADING RESULTS

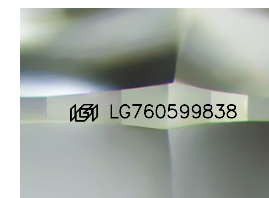
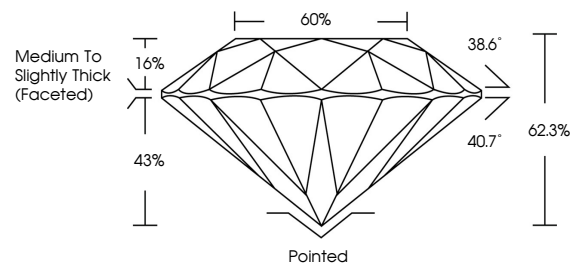
Carat Weight **1.18 CARAT**
Color Grade **D**
Clarity Grade **VVS 1**
Cut Grade **VERY GOOD**

ADDITIONAL GRADING INFORMATION

Polish **VERY GOOD**
Symmetry **VERY GOOD**
Fluorescence **NONE**
Inscription(s) **IGI LG760599838**

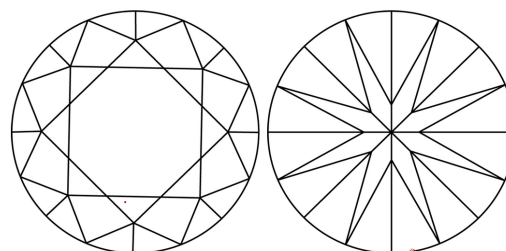
Comments: As Grown - No indication of post-growth treatment.
This Laboratory Grown Diamond was created by High Pressure High Temperature (HPHT) growth process.
Type II

PROPORTIONS



Sample Image Used

CLARITY CHARACTERISTICS



KEY TO SYMBOLS

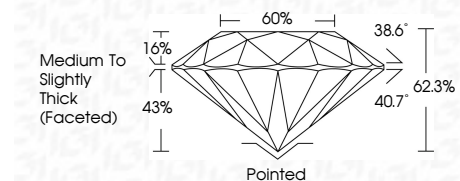
Red symbols indicate internal characteristics.
Green symbols indicate external characteristics.

COLOR

D E F G H I J Faint Very Light Light

CLARITY

FL	IF	VVS ¹⁻²	VS ¹⁻²	SI ¹⁻²	I ¹⁻³
Flawless	Internally Flawless	Very Very Slightly Included	Very Slightly Included	Slightly Included	Included



ADDITIONAL GRADING INFORMATION

Polish **VERY GOOD**
Symmetry **VERY GOOD**
Fluorescence **NONE**
Inscription(s) **IGI LG760599838**
Comments: As Grown - No indication of post-growth treatment.
This Laboratory Grown Diamond was created by High Pressure High Temperature (HPHT) growth process.
Type II



IGI



January 1, 2026
IGI Report No LG760599838
ROUND BRILLIANT
6.66 - 6.73 X 4.17 MM
1.18 CARAT
Color Grade **D**
Clarity Grade **VVS 1**
Depth **62.3%**
Table **60%**
Girdle **Medium To Slightly Thick (Faceted)**
Culet **Pointed**
Polish **VERY GOOD**
Symmetry **VERY GOOD**
Fluorescence **NONE**
Inscriptions(s) **IGI LG760599838**
Comments: As Grown - No indication of post-growth treatment.
This Laboratory Grown Diamond was created by High Pressure High Temperature (HPHT) growth process.
Type II