



ELECTRONIC COPY

LG760599800
Report verification at igi.org



December 31, 2025

IGI Report Number **LG760599800**

Description **LABORATORY GROWN DIAMOND**

Shape and Cutting Style **ROUND BRILLIANT**

Measurements **7.14 - 7.17 X 4.58 MM**

GRADING RESULTS

Carat Weight **1.50 CARAT**

Color Grade **G**

Clarity Grade **VS 2**

Cut Grade **VERY GOOD**

December 31, 2025
IGI Report Number **LG760599800**
Description **LABORATORY GROWN DIAMOND**
Shape and Cutting Style **ROUND BRILLIANT**
Measurements **7.14 - 7.17 X 4.58 MM**

GRADING RESULTS

Carat Weight **1.50 CARAT**

Color Grade **G**

Clarity Grade **VS 2**

Cut Grade **VERY GOOD**

ADDITIONAL GRADING INFORMATION

Polish **VERY GOOD**

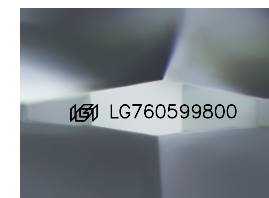
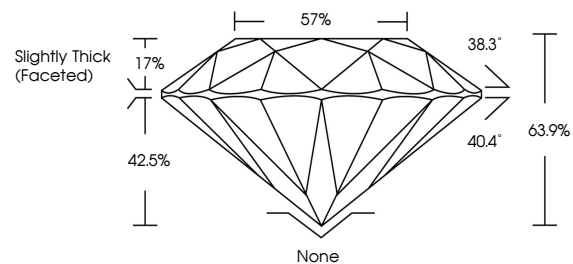
Symmetry **VERY GOOD**

Fluorescence **NONE**

Inscription(s) **IGI LG760599800**

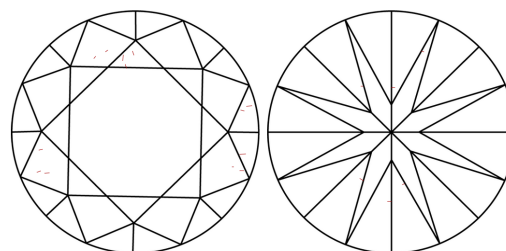
Comments: As Grown - No indication of post-growth treatment.
This Laboratory Grown Diamond was created by High Pressure High Temperature (HPHT) growth process.
Type II

PROPORTIONS



Sample Image Used

CLARITY CHARACTERISTICS



KEY TO SYMBOLS

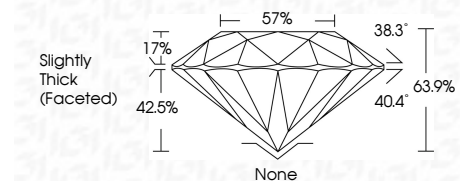
Red symbols indicate internal characteristics.
Green symbols indicate external characteristics.

COLOR

D E F G H I J Faint Very Light Light

CLARITY

FL	IF	VS ¹⁻²	VS ¹⁻²	SI ¹⁻²	I ¹⁻³
Flawless	Internally Flawless	Very Very Slightly Included	Very Slightly Included	Slightly Included	Included



ADDITIONAL GRADING INFORMATION

Polish **VERY GOOD**

Symmetry **VERY GOOD**

Fluorescence **NONE**

Inscription(s) **IGI LG760599800**

Comments: As Grown - No indication of post-growth treatment.
This Laboratory Grown Diamond was created by High Pressure High Temperature (HPHT) growth process.
Type II



IGI



December 31, 2025
IGI Report No LG760599800
ROUND BRILLIANT
Carat Weight **1.50 CARAT**
Color Grade **G**
Clarity Grade **VS 2**
Depth **63.9%**
Table **57%**
Girdle **Slightly Thick (Faceted)**
Culet **None**
Polish **VERY GOOD**
Symmetry **VERY GOOD**
Fluorescence **NONE**
Inscriptions(s) **IGI LG760599800**
Comments: As Grown - No indication of post-growth treatment.
This Laboratory Grown Diamond was created by High Pressure High Temperature (HPHT) growth process.
Type II