



ELECTRONIC COPY

LG760599792
Report verification at igi.org



December 29, 2025

IGI Report Number **LG760599792**

Description **LABORATORY GROWN DIAMOND**

Shape and Cutting Style **ROUND BRILLIANT**

Measurements **8.03 - 8.13 X 4.98 MM**

GRADING RESULTS

Carat Weight **2.07 CARATS**

Color Grade **G**

Clarity Grade **VS 2**

Cut Grade **GOOD**

December 29, 2025
IGI Report Number **LG760599792**
Description **LABORATORY GROWN DIAMOND**
Shape and Cutting Style **ROUND BRILLIANT**
Measurements **8.03 - 8.13 X 4.98 MM**

GRADING RESULTS

Carat Weight **2.07 CARATS**

Color Grade **G**

Clarity Grade **VS 2**

Cut Grade **GOOD**

ADDITIONAL GRADING INFORMATION

Polish **VERY GOOD**

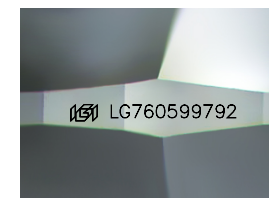
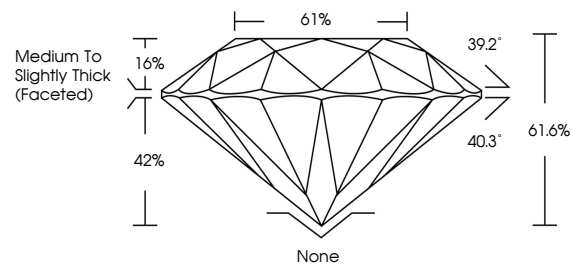
Symmetry **VERY GOOD**

Fluorescence **NONE**

Inscription(s) **IGI LG760599792**

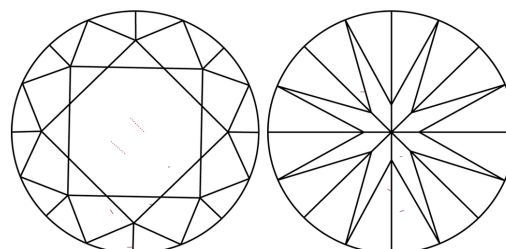
Comments: This Laboratory Grown Diamond was created by Chemical Vapor Deposition (CVD) growth process.
Type IIa

PROPORTIONS



Sample Image Used

CLARITY CHARACTERISTICS



KEY TO SYMBOLS

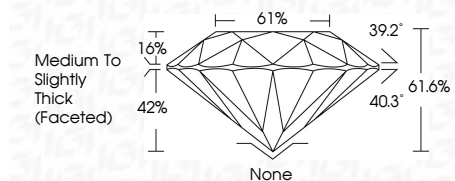
Red symbols indicate internal characteristics.
Green symbols indicate external characteristics.

COLOR

D E F G H I J Faint Very Light Light

CLARITY

FL	IF	VS ¹⁻²	VS ¹⁻²	SI ¹⁻²	I ¹⁻³
Flawless	Internally Flawless	Very Very Slightly Included	Very Slightly Included	Slightly Included	Included



ADDITIONAL GRADING INFORMATION

Polish **VERY GOOD**

Symmetry **VERY GOOD**

Fluorescence **NONE**

Inscription(s) **IGI LG760599792**

Comments: This Laboratory Grown Diamond was created by Chemical Vapor Deposition (CVD) growth process.
Type IIa



IGI



December 29, 2025
IGI Report No LG760599792
ROUND BRILLIANT
8.03 - 8.13 X 4.98 MM
2.07 CARATS
G
VS 2
GOOD
61.6%
61%
Medium To Slightly Thick (Faceted)
None
VERY GOOD
VERY GOOD
NONE
IGI LG760599792

Comments: This Laboratory Grown Diamond was created by Chemical Vapor Deposition (CVD) growth process.
Type IIa