



ELECTRONIC COPY

LG760596135
Report verification at igi.org



December 27, 2025

IGI Report Number **LG760596135**

Description **LABORATORY GROWN DIAMOND**

Shape and Cutting Style **CUT CORNERED
RECTANGULAR MODIFIED
BRILLIANT**

Measurements **9.80 X 7.23 X 4.79 MM**

GRADING RESULTS

Carat Weight **2.90 CARATS**

Color Grade **F**

Clarity Grade **VS 1**

December 27, 2025
IGI Report Number **LG760596135**
Description **LABORATORY GROWN DIAMOND**
Shape and Cutting Style **CUT CORNERED RECTANGULAR
MODIFIED BRILLIANT**
Measurements **9.80 X 7.23 X 4.79 MM**

GRADING RESULTS

Carat Weight **2.90 CARATS**

Color Grade **F**

Clarity Grade **VS 1**

ADDITIONAL GRADING INFORMATION

Polish **EXCELLENT**

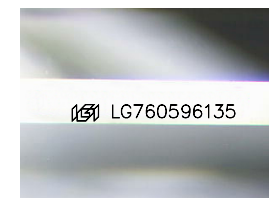
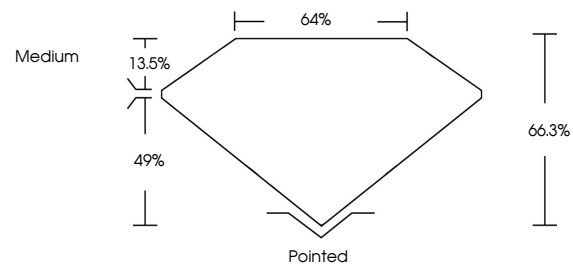
Symmetry **EXCELLENT**

Fluorescence **NONE**

Inscription(s) **IGI LG760596135**

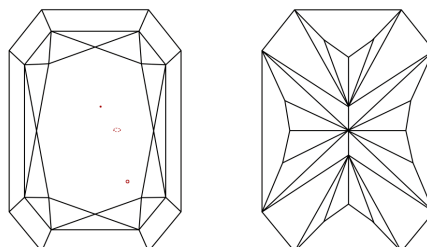
Comments: This Laboratory Grown Diamond was created by Chemical Vapor Deposition (CVD) growth process.
Type IIa

PROPORTIONS



Sample Image Used

CLARITY CHARACTERISTICS



KEY TO SYMBOLS

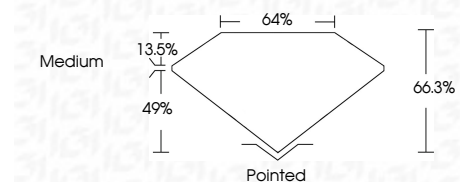
Red symbols indicate internal characteristics.
Green symbols indicate external characteristics.

COLOR

D E F G H I J Faint Very Light Light

CLARITY

| FL | IF | VS ¹⁻² | VS ¹⁻² | SI ¹⁻² | I ¹⁻³ |
|----------|---------------------|-----------------------------|------------------------|-------------------|------------------|
| Flawless | Internally Flawless | Very Very Slightly Included | Very Slightly Included | Slightly Included | Included |



ADDITIONAL GRADING INFORMATION

Polish **EXCELLENT**

Symmetry **EXCELLENT**

Fluorescence **NONE**

Inscription(s) **IGI LG760596135**

Comments: This Laboratory Grown Diamond was created by Chemical Vapor Deposition (CVD) growth process.
Type IIa



IGI



December 27, 2025
IGI Report No LG760596135
CUT CORNERED RECT. MODIFIED BRILLIANT
2.90 CARATS
F
9.80 X 7.23 X 4.79 MM
Color Grade
F
Depth
49%
Table
13.5%
Girdle
Medium
Culet
Pointed
Polish
EXCELLENT
Symmetry
EXCELLENT
Fluorescence
NONE
Inscription(s)
IGI LG760596135
Comments: This Laboratory Grown Diamond was created by Chemical Vapor Deposition (CVD) growth process.
Type IIa