



**INTERNATIONAL
GEMOLOGICAL
INSTITUTE**

ELECTRONIC COPY

LABORATORY GROWN DIAMOND REPORT

LG760593810
Report verification at igi.org

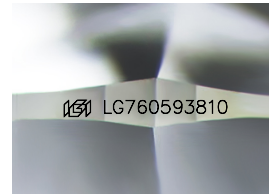
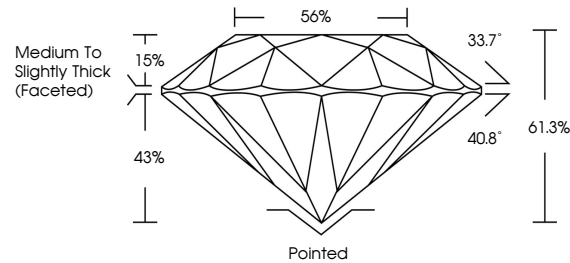
January 2, 2026	
IGI Report Number	LG760593810
Description	LABORATORY GROWN DIAMOND
Shape and Cutting Style	ROUND BRILLIANT
Measurements	7.42 - 7.48 X 4.56 MM
GRADING RESULTS	
Carat Weight	1.53 CARAT
Color Grade	F
Clarity Grade	VS 1
Cut Grade	IDEAL

ADDITIONAL GRADING INFORMATION

Polish	EXCELLENT
Symmetry	EXCELLENT
Fluorescence	NONE
Inscription(s)	 LG760593810

Comments: This Laboratory Grown Diamond was created by Chemical Vapor Deposition (CVD) growth process. Type IIa

PROPORTIONS



Sample Image Used

COLOR

D E F G H I J Faint Very Light Light

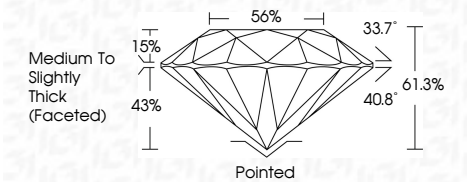
CLARITY

FL	IF	VVS ¹⁻²	VS ¹⁻²	SI ¹⁻²	I ¹⁻³
Flawless	Internally Flawless	Very Very Slightly Included	Very Slightly Included	Slightly Included	Included

LABORATORY GROWN DIAMOND REPORT



January 2, 2026	
IGI Report Number	LG760593810
Description	LABORATORY GROWN DIAMOND
Shape and Cutting Style	ROUND BRILLIANT
Measurements	7.42 - 7.48 X 4.56 MM
GRADING RESULTS	
Carat Weight	1.53 CARAT
Color Grade	F
Clarity Grade	VS 1
Cut Grade	IDEAL



ADDITIONAL GRADING INFORMATION

Polish	EXCELLENT
Symmetry	EXCELLENT
Fluorescence	NONE
Inscription(s)	 LG760593810
Comments: This Laboratory Grown Diamond was created by Chemical Vapor Deposition (CVD) growth process. Type IIa	



IGI



© IGI 2020, International Gemological Institute

FD - 10 20

www.igi.org

THIS DOCUMENT WAS PRODUCED WITH THE FOLLOWING SECURITY MEASURES: SPECIAL DOCUMENT PAPER, INK SCREENS, WATERMARK, BACKGROUND DESIGNS, HOLOGRAM AND OTHER SECURITY FEATURES NOT LISTED AND DO EXCEED DOCUMENT SECURITY INDUSTRY GUIDELINES

January 2, 2026		IGI Report No IGI70595810	
ROUND BRILLIANT		1.53 CARAT F	
7.42 - 7.48 X 4.56 MM		VS 1 IDEAL 61.3% 56%	
Coral Weight		Medium to Slightly Thick (Faceted)	
Color Grade		Polished EXCELLENT	
Clarity Grade		EXCELLENT	
Cut Grade		NONE	
Depth		I69 IGI70595810	
Table		Comments:	
Girdle		This Laboratory Grown Diamond was created by Chemical Vapor Deposition (CVD) growth process, type IIa	
		Fluorescence Inscription(s)	