



ELECTRONIC COPY

LABORATORY GROWN DIAMOND REPORT

LG760593803
Report verification at igi.org

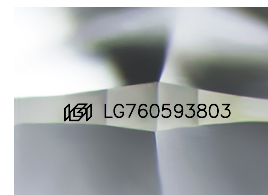
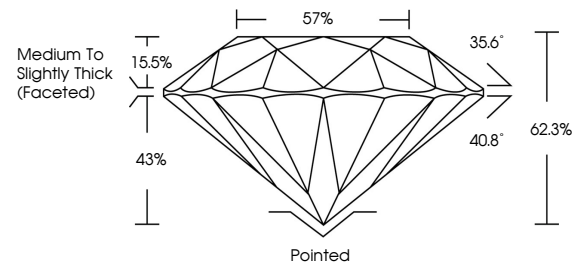
January 2, 2026	
IGI Report Number	LG760593803
Description	LABORATORY GROWN DIAMOND
Shape and Cutting Style	ROUND BRILLIANT
Measurements	8.04 - 8.07 X 5.02 MM
GRADING RESULTS	
Carat Weight	2.02 CARATS
Color Grade	F
Clarity Grade	VVS 2
Cut Grade	IDEAL

ADDITIONAL GRADING INFORMATION

Polish	EXCELLENT
Symmetry	EXCELLENT
Fluorescence	NONE
Inscription(s)	 LG760593803

Comments: This Laboratory Grown Diamond was created by Chemical Vapor Deposition (CVD) growth process. Type IIa

PROPORTIONS



Sample Image Used

COLOR

D E F G H I J Faint Very Light Light

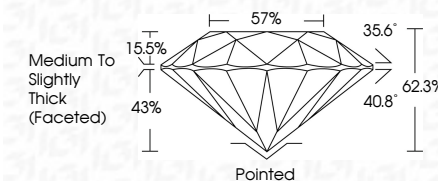
CLARITY

FL	IF	VVS ¹⁻²	VS ¹⁻²	SI ¹⁻²	I ¹⁻³
Flawless	Internally Flawless	Very Very Slightly Included	Very Slightly Included	Slightly Included	Included

LABORATORY GROWN DIAMOND REPORT



January 2, 2026	
IGI Report Number	LG760593803
Description	LABORATORY GROWN DIAMOND
Shape and Cutting Style	ROUND BRILLIANT
Measurements	8.04 - 8.07 X 5.02 MM
GRADING RESULTS	
Carat Weight	2.02 CARATS
Color Grade	F
Clarity Grade	VVS 2
Cut Grade	IDEAL



ADDITIONAL GRADING INFORMATION

Polish	EXCELLENT
Symmetry	EXCELLENT
Fluorescence	NONE
Inscription(s)	 LG760593803
Comments: This Laboratory Grown Diamond was created by Chemical Vapor Deposition (CVD) growth process. Type IIa	



© IGI 2020, International Gemological Institute

FD - 10 20



THIS DOCUMENT WAS PRODUCED WITH THE FOLLOWING SECURITY MEASURES: SPECIAL DOCUMENT PAPER, INK SCREENS, WATERMARK, BACKGROUND DESIGNS, HOLOGRAM, AND OTHER SECURITY FEATURES NOT LISTED AND DO EXCEED DOCUMENT SECURITY INDUSTRY GUIDELINES.

G					
January 2, 2026					
GI Report No I67/G593803					
ROUND BRILLIANT					
<hr/>					
G-04 - 6.07 X 5.02 MM					
Carat Weight	Color Grade	Clarity Grade	Cut Grade	Depth	Polar Plot
F	VVS 2	IDeal	62.3%	57%	
Medium to Slightly Thick (Faceted)					
Pointed					
EXCELLENT					
EXCELLENT					
NONE					
J68 L67/G593803					
<hr/>					
Comments:					
Treated by Chem Diamond was created by Chemical Vapor Deposition (CVD) growth process, type IIa					



www.igi.org