



**INTERNATIONAL  
GEMOLOGICAL  
INSTITUTE**

**ELECTRONIC COPY**



January 3, 2026

IGI Report Number **LG760593238**

**ROUND BRILLIANT**

**LABORATORY GROWN DIAMOND**

**4.25 - 4.28 X 2.59 MM**

Carat Weight **0.30 CARAT**

Color Grade **FANCY VIVID BLUE**

Clarity Grade **VS 2**

Cut Grade **EXCELLENT**

Polish **VERY GOOD**

Symmetry **VERY GOOD**

Fluorescence **NONE**

Inscription(s) **IGI LG760593238**

Comments: This Laboratory Grown Diamond was created by Chemical Vapor Deposition (CVD) growth process. Indications of post-growth treatment.

**LABORATORY GROWN DIAMOND REPORT**

January 3, 2026

IGI Report Number

**LG760593238**

Description

**LABORATORY GROWN DIAMOND**

Shape and Cutting Style

**ROUND BRILLIANT**

Measurements

**4.25 - 4.28 X 2.59 MM**

**GRADING RESULTS**

Carat Weight

**0.30 CARAT**

Color Grade

**FANCY VIVID BLUE**

Clarity Grade

**VS 2**

Cut Grade

**EXCELLENT**

**ADDITIONAL GRADING INFORMATION**

Polish

**VERY GOOD**

Symmetry

**VERY GOOD**

Fluorescence

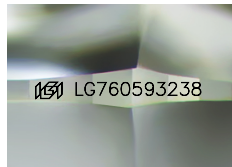
**NONE**

Inscription(s)

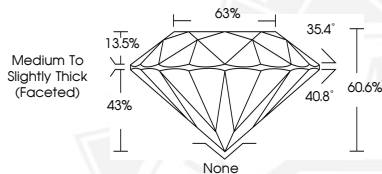
**IGI LG760593238**

Comments: This Laboratory Grown Diamond was created by Chemical Vapor Deposition (CVD) growth process.

Indications of post-growth treatment.



Sample Image Used



January 3, 2026

IGI Report Number **LG760593238**

**ROUND BRILLIANT**

**LABORATORY GROWN DIAMOND**

**4.25 - 4.28 X 2.59 MM**

Carat Weight **0.30 CARAT**

Color Grade **FANCY VIVID BLUE**

Clarity Grade **VS 2**

Cut Grade **EXCELLENT**

Polish **VERY GOOD**

Symmetry **VERY GOOD**

Fluorescence **NONE**

Inscription(s) **IGI LG760593238**

Comments: This Laboratory Grown Diamond was created by Chemical Vapor Deposition (CVD) growth process. Indications of post-growth treatment.



THIS DOCUMENT WAS PRODUCED WITH THE FOLLOWING SECURITY MEASURES: SPECIAL DOCUMENT PAPER, INK SCREENS, WATERMARK, BACKGROUND DESIGNS, HOLOGRAM AND OTHER SECURITY FEATURES NOT LISTED AND DO EXCEED DOCUMENT SECURITY INDUSTRY GUIDELINES.

For terms & conditions and to verify this report, please visit [www.igi.org](http://www.igi.org)