



# INTERNATIONAL GEMOLOGICAL INSTITUTE

ELECTRONIC COPY

## LABORATORY GROWN DIAMOND REPORT

January 3, 2026  
IGI Report Number **LG760590875**  
Description **LABORATORY GROWN DIAMOND**  
Shape and Cutting Style **EMERALD CUT**  
Measurements **5.55 X 3.72 X 2.41 MM**

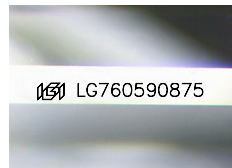
### GRADING RESULTS

Carat Weight **0.50 CARAT**  
Color Grade **FANCY LIGHT BROWN PINK**  
Clarity Grade **VS 2**

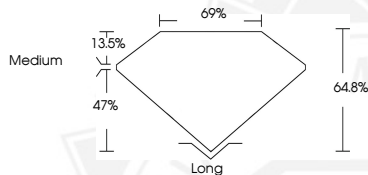
### ADDITIONAL GRADING INFORMATION

Polish **VERY GOOD**  
Symmetry **GOOD**  
Fluorescence **SLIGHT**  
Inscription(s) **IGI LG760590875**

Comments: This Laboratory Grown Diamond was created by Chemical Vapor Deposition (CVD) growth process. Indications of post-growth treatment.



Sample Image Used



January 3, 2026

IGI Report Number **LG760590875**

**EMERALD CUT**

**LABORATORY GROWN DIAMOND**

**5.55 X 3.72 X 2.41 MM**

Carat Weight **0.50 CARAT**  
Color Grade **FANCY LIGHT BROWN PINK**

Clarity Grade **VS 2**

Polish **VERY GOOD**

Symmetry **GOOD**

Fluorescence **SLIGHT**

Inscription(s) **IGI LG760590875**

Comments: This Laboratory Grown Diamond was created by Chemical Vapor Deposition (CVD) growth process. Indications of post-growth treatment.



January 3, 2026

IGI Report Number **LG760590875**

**EMERALD CUT**

**LABORATORY GROWN DIAMOND**

**5.55 X 3.72 X 2.41 MM**

Carat Weight **0.50 CARAT**  
Color Grade **FANCY LIGHT BROWN PINK**

Clarity Grade **VS 2**

Polish **VERY GOOD**

Symmetry **GOOD**

Fluorescence **SLIGHT**

Inscription(s) **IGI LG760590875**

Comments: This Laboratory Grown Diamond was created by Chemical Vapor Deposition (CVD) growth process. Indications of post-growth treatment.



THIS DOCUMENT WAS PRODUCED WITH THE FOLLOWING SECURITY MEASURES: SPECIAL DOCUMENT PAPER, INK SCREENS, WATERMARK, BACKGROUND DESIGNS, HOLOGRAM AND OTHER SECURITY FEATURES NOT LISTED AND DO EXCEED DOCUMENT SECURITY INDUSTRY GUIDELINES.

For terms & conditions and to verify this report, please visit [www.igi.org](http://www.igi.org)