



**LABORATORY GROWN DIAMOND REPORT**

January 2, 2026  
 IGI Report Number **LG760590859**  
 Description **LABORATORY GROWN DIAMOND**  
 Shape and Cutting Style **EMERALD CUT**  
 Measurements **5.66 X 3.95 X 2.62 MM**

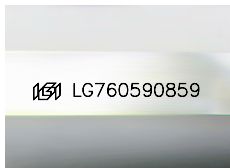
**GRADING RESULTS**

Carat Weight **0.59 CARAT**  
 Color Grade **FANCY INTENSE PINK**  
 Clarity Grade **VS 1**

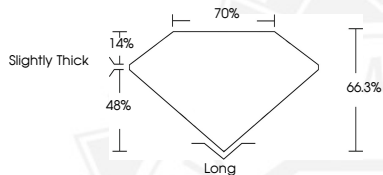
**ADDITIONAL GRADING INFORMATION**

Polish **VERY GOOD**  
 Symmetry **VERY GOOD**  
 Fluorescence **SLIGHT**  
 Inscription(s) **IGI LG760590859**

Comments: This Laboratory Grown Diamond was created by Chemical Vapor Deposition (CVD) growth process. Indications of post-growth treatment.



Sample Image Used



January 2, 2026  
 IGI Report Number **LG760590859**  
**EMERALD CUT**  
**LABORATORY GROWN DIAMOND**  
**5.66 X 3.95 X 2.62 MM**  
 Carat Weight **0.59 CARAT**  
 Color Grade **FANCY INTENSE PINK**  
 Clarity Grade **VS 1**  
 Polish **VERY GOOD**  
 Symmetry **VERY GOOD**  
 Fluorescence **SLIGHT**  
 Inscription(s) **IGI LG760590859**

Comments: This Laboratory Grown Diamond was created by Chemical Vapor Deposition (CVD) growth process. Indications of post-growth treatment.



January 2, 2026  
 IGI Report Number **LG760590859**  
**EMERALD CUT**  
**LABORATORY GROWN DIAMOND**  
**5.66 X 3.95 X 2.62 MM**  
 Carat Weight **0.59 CARAT**  
 Color Grade **FANCY INTENSE PINK**  
 Clarity Grade **VS 1**  
 Polish **VERY GOOD**  
 Symmetry **VERY GOOD**  
 Fluorescence **SLIGHT**  
 Inscription(s) **IGI LG760590859**

Comments: This Laboratory Grown Diamond was created by Chemical Vapor Deposition (CVD) growth process. Indications of post-growth treatment.



THIS DOCUMENT WAS PRODUCED WITH THE FOLLOWING SECURITY MEASURES: SPECIAL DOCUMENT PAPER, INK SCREENS, WATERMARK, BACKGROUND DESIGNS, HOLOGRAM AND OTHER SECURITY FEATURES NOT LISTED AND DO EXCEED DOCUMENT SECURITY INDUSTRY GUIDELINES.