



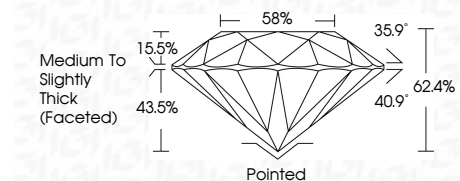
ELECTRONIC COPY

LG760590170 Report verification at igi.org



December 27, 2025 IGI Report Number LG760590170 Description LABORATORY GROWN DIAMOND Shape and Cutting Style ROUND BRILLIANT Measurements 6.43 - 6.47 X 4.02 MM

GRADING RESULTS Carat Weight 1.03 CARAT Color Grade E Clarity Grade VVS 1 Cut Grade IDEAL

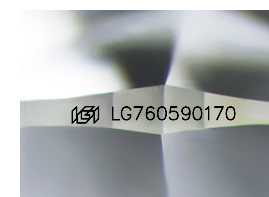


ADDITIONAL GRADING INFORMATION Polish EXCELLENT Symmetry EXCELLENT Fluorescence NONE Inscription(s) LG760590170 Comments: As Grown - No indication of post-growth treatment. This Laboratory Grown Diamond was created by High Pressure High Temperature (HPHT) growth process. Type II



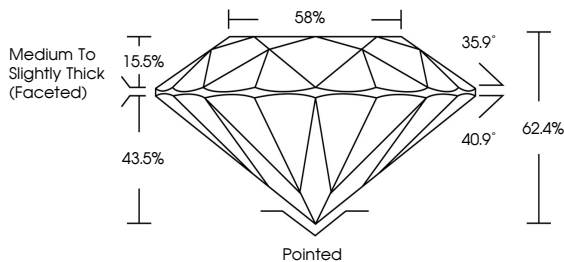
December 27, 2025 IGI Report No LG760590170 ROUND BRILLIANT 6.43 - 6.47 X 4.02 MM 1.03 CARAT E VVS 1 IDEAL 62.4% 58% Medium To Slightly Thick (Faceted) Pointed EXCELLENT EXCELLENT NONE NONE LG760590170

Comments: As Grown - No indication of post-growth treatment. This Laboratory Grown Diamond was created by High Pressure High Temperature (HPHT) growth process. Type II

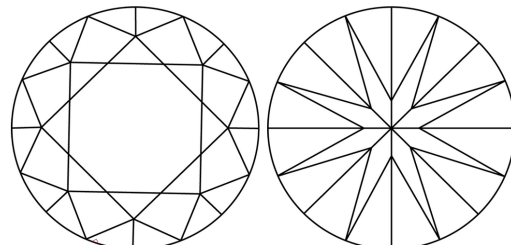


Sample Image Used

PROPORTIONS



CLARITY CHARACTERISTICS



KEY TO SYMBOLS Red symbols indicate internal characteristics. Green symbols indicate external characteristics.

COLOR

Color scale table with categories D, E, F, G, H, I, J, Faint, Very Light, Light.

CLARITY

Clarity scale table with categories FL, IF, VVS 1-2, VS 1-2, SI 1-2, I 1-3, Flawless, Internally Flawless, Very Very Slightly Included, Very Slightly Included, Slightly Included, Included.



December 27, 2025 IGI Report Number LG760590170 Description LABORATORY GROWN DIAMOND Shape and Cutting Style ROUND BRILLIANT Measurements 6.43 - 6.47 X 4.02 MM

GRADING RESULTS Carat Weight 1.03 CARAT Color Grade E Clarity Grade VVS 1 Cut Grade IDEAL

ADDITIONAL GRADING INFORMATION Polish EXCELLENT Symmetry EXCELLENT Fluorescence NONE Inscription(s) LG760590170

Comments: As Grown - No indication of post-growth treatment. This Laboratory Grown Diamond was created by High Pressure High Temperature (HPHT) growth process. Type II

