

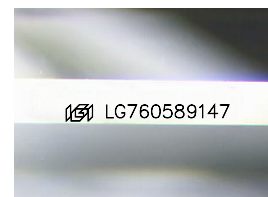
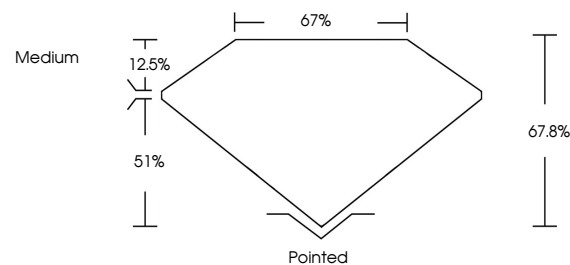


ELECTRONIC COPY

LABORATORY GROWN DIAMOND REPORT

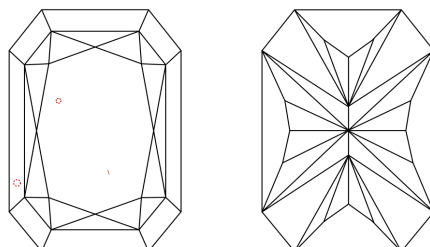
LG760589147
Report verification at igi.org

PROPORTIONS



Sample Image Used

CLARITY CHARACTERISTICS



KEY TO SYMBOLS

Red symbols indicate internal characteristics.
Green symbols indicate external characteristics.

COLOR

D E F G H I J Faint Very Light Light

CLARITY

FL	IF	VS ¹⁻²	VS ¹⁻²	SI ¹⁻²	I ¹⁻³
Flawless	Internally Flawless	Very Very Slightly Included	Very Slightly Included	Slightly Included	Included

LABORATORY GROWN DIAMOND REPORT



December 27, 2025

IGI Report Number **LG760589147**Description **LABORATORY GROWN DIAMOND**

Shape and Cutting Style

CUT CORNERED
RECTANGULAR MODIFIED
BRILLIANT

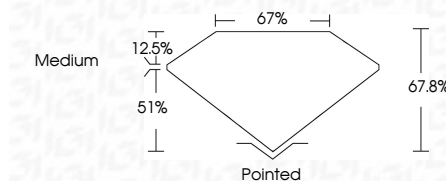
Measurements 10.08 X 7.04 X 4.77 MM

GRADING RESULTS

Carat Weight **2.94 CARATS**

Color Grade

Clarity Grade VS 1



ADDITIONAL GRADING INFORMATION

Polish **EXCELLENT**Symmetry **EXCELLENT**Fluorescence NONEInscription(s) LG760589147

Comments: This Laboratory Grown Diamond was created by Chemical Vapor Deposition (CVD) growth process.
Type IIa



© IGI 2020, International Gemological Institute

FD - 10 20

www.igi.org

THIS DOCUMENT WAS PRODUCED WITH THE FOLLOWING SECURITY MEASURES: SPECIAL DOCUMENT PAPER, INK SCREENS, WATERMARK, BACKGROUND DESIGNS, HOLOGRAM AND OTHER SECURITY FEATURES NOT LISTED AND DO EXCEED DOCUMENT SECURITY INDUSTRY GUIDELINE

December 27, 2025	
SU Report No LG76089147	
CUT REPORTED RECT. MODIFIED BRILLIANT	
10.08 X 7.04 X 4.77 MM	2.94 CARATS
Carat Weight	F
Color Grade	VS 1
Clarity Grade	67.8%
Depth	67%
Gable	Medium
Table	
Pointed	
Culet	Excellent
Polish	Excellent
Symmetry	NONE
Fluorescence	None
Inscriptions(s)	LGI LG76089147

Comments:

The Laboratory Grown Diamond was
analyzed by Laser Vapor Deposition
(LVD) growth process.
type IIG