

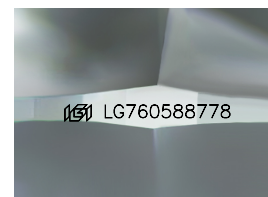
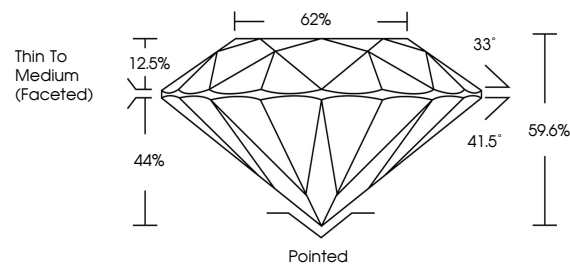


**ELECTRONIC COPY**

## LABORATORY GROWN DIAMOND REPORT

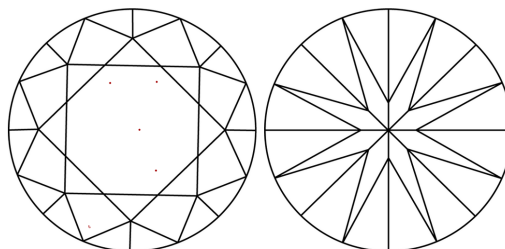
LG760588778  
Report verification at [igi.org](https://igi.org)

## PROPORTIONS



Sample Image Used

## CLARITY CHARACTERISTICS



## KEY TO SYMBOLS

Red symbols indicate internal characteristics.  
Green symbols indicate external characteristics.

## COLOR

D E F G H I J Faint Very Light Light

## CLARITY

FL	IF	VVS <sup>1-2</sup>	VS <sup>1-2</sup>	SI <sup>1-2</sup>	I <sup>1-3</sup>
Flawless	Internally Flawless	Very Very Slightly Included	Very Slightly Included	Slightly Included	Included



December 29, 2025

IGI Report Number **LG760588778**Description **LABORATORY GROWN DIAMOND**Shape and Cutting Style **ROUND BRILLIANT**

Measurements 8.21 - 8.27 X 4.92 MM

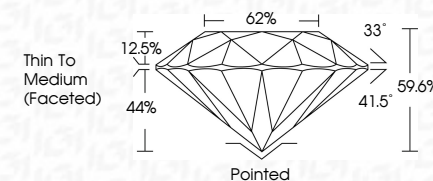
## GRADING RESULTS

Carat Weight **2.01 CARATS**

Color Grade E

Clarity Grade **VVS 2**

Cut Grade **EXCELLENT**



### ADDITIONAL GRADING INFORMATION

Polish **EXCELLENT**

Symmetry **EXCELLENT**

Fluorescence **NONE**Inscription(s) 1131 LG760588778

Comments: This Laboratory Grown Diamond was created by Chemical Vapor Deposition (CVD) growth process.  
Type IIa



© IGI 2020, International Gemological Institute

FD - 10 20



THIS DOCUMENT WAS PRODUCED WITH THE FOLLOWING SECURITY MEASURES: SPECIAL DOCUMENT PAPER, INK SCREENS, WATERMARK, BACKGROUND DESIGNS, HOLOGRAM AND OTHER SECURITY FEATURES NOT LISTED AND DO EXCEED DOCUMENT SECURITY INDUSTRY GUIDELINES

**www.igi.org**

December 29, 2025  
LGI Report No LG760588778  
ROUND BRILLIANT

2.01 CARATS	2.01 CARATS
Color Grade	Color Grade
Clarity Grade	Clarity Grade
Cut Grade	Cut Grade
Depth	Depth
Table	Table
Girdle	Girdle
Culet	Culet
Polish	Polish
Symmetry	Symmetry
Fluorescence	Fluorescence
Thin To Medium (Faceted)	Pointed
EXCELLENT	EXCELLENT
99.0%	EXCELLENT
66%	NONE
	4mm 1274048278

**Comments:**  
This Laboratory Grown Diamond was  
created by Chemical Vapor Deposition  
(CVD) growth process.