



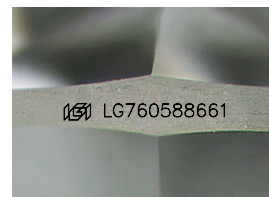
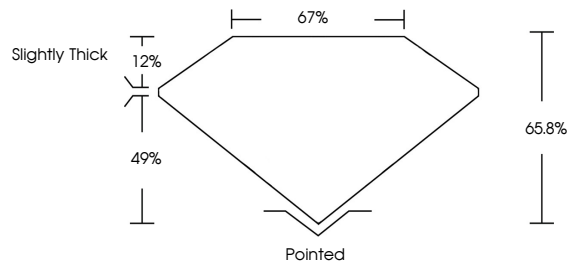
**INTERNATIONAL
GEMOLOGICAL
INSTITUTE**

ELECTRONIC COPY

LABORATORY GROWN DIAMOND REPORT

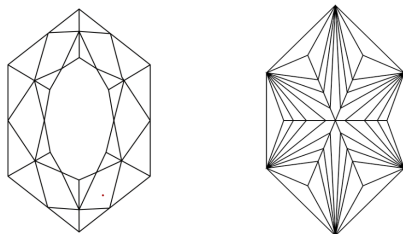
LG760588661
Report verification at igi.org

PROPORTIONS



Sample Image Used

CLARITY CHARACTERISTICS



KEY TO SYMBOLS

Red symbols indicate internal characteristics.
Green symbols indicate external characteristics.

COLOR

D E F G H I J Faint Very Light Light

CLARITY

FL	IF	VVS ¹⁻²	VS ¹⁻²	SI ¹⁻²	I ¹⁻³
Flawless	Internally Flawless	Very Very Slightly Included	Very Slightly Included	Slightly Included	Included



© IGI 2020, International Gemological Institute

FD - 10 20



THIS DOCUMENT WAS PRODUCED WITH THE FOLLOWING SECURITY MEASURES: SPECIAL DOCUMENT PAPER, INK SCREENS, WATERMARK BACKGROUND DESIGNS, HOLOGRAM AND OTHER SECURITY FEATURES NOT LISTED AND DO EXCEED DOCUMENT SECURITY INDUSTRY GUIDELINES.

LABORATORY GROWN DIAMOND REPORT



December 29, 2025

IGI Report Number **LG760588661**

Description	LABORATORY GROWN DIAMOND
-------------	--------------------------

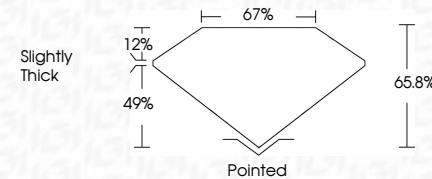
Shape and Cutting Style **HEXAGONAL MODIFIED
BRILLIANT**

Measurements 13.62 X 7.32 X 4.82 MM

GRADING RESULTS

Carat Weight **2.92 CARATS**

Color Grade	E
-------------	---

Clarity Grade **VVS 2**

ADDITIONAL GRADING INFORMATION

Polish **EXCELLENT**Symmetry **EXCELLENT**Fluorescence **NONE**Inscription(s)  LG760588661

Comments: This Laboratory Grown Diamond was created by Chemical Vapor Deposition (CVD) growth process.
Type IIa



IG

December 29, 2025	Carat Weight	2.92 CARATS
IGI Report No. IGI0598461	Color Grade	E
HEAT/SONAL MODIFIED BRILLANT	Clarity Grade	VVS 2
13.42 X 4.82 X 4.02 MM	Depth	65.6%
	Table	67%
	Girdle	Slightly Thick
	Culet	Pointed
	Polish	EXCELLENT
	Symmetry	EXCELLENT
	Fluorescence	NONE
	Inscription(s)	IGI LGI0598461

Comments:
 The Laboratory Grown Diamond was
 created by Chemical Vapor Deposition
 growth process.
 Type IIa