



**ELECTRONIC COPY**

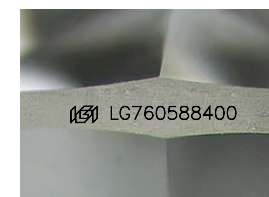
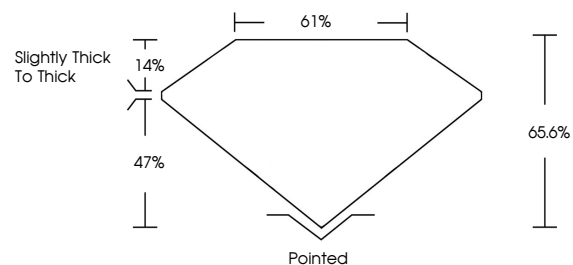
LG760588400  
Report verification at igi.org



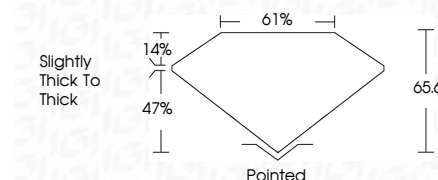
December 26, 2025  
IGI Report Number **LG760588400**  
Description **LABORATORY GROWN DIAMOND**  
Shape and Cutting Style **HEXAGONAL MODIFIED BRILLIANT**  
Measurements **17.77 X 8.41 X 5.52 MM**  
**GRADING RESULTS**  
Carat Weight **5.55 CARATS**  
Color Grade **D**  
Clarity Grade **VVS 2**

December 26, 2025  
IGI Report Number **LG760588400**  
Description **LABORATORY GROWN DIAMOND**  
Shape and Cutting Style **HEXAGONAL MODIFIED BRILLIANT**  
Measurements **17.77 X 8.41 X 5.52 MM**  
**GRADING RESULTS**  
Carat Weight **5.55 CARATS**  
Color Grade **D**  
Clarity Grade **VVS 2**

**PROPORTIONS**



Sample Image Used



**ADDITIONAL GRADING INFORMATION**

Polish **EXCELLENT**  
Symmetry **EXCELLENT**  
Fluorescence **NONE**  
Inscription(s) **IGI LG760588400**

Comments: This Laboratory Grown Diamond was created by Chemical Vapor Deposition (CVD) growth process. Type IIa

**ADDITIONAL GRADING INFORMATION**

Polish **EXCELLENT**  
Symmetry **EXCELLENT**  
Fluorescence **NONE**  
Inscription(s) **IGI LG760588400**  
Comments: This Laboratory Grown Diamond was created by Chemical Vapor Deposition (CVD) growth process. Type IIa

**COLOR**

D E F G H I J Faint Very Light Light

**CLARITY**

FL	IF	VVS <sup>1-2</sup>	VS <sup>1-2</sup>	SI <sup>1-2</sup>	I <sup>1-3</sup>
Flawless	Internally Flawless	Very Very Slightly Included	Very Slightly Included	Slightly Included	Included



**IGI**



December 26, 2025  
IGI Report No **LG760588400**  
**HEXAGONAL MODIFIED BRILLIANT**  
17.77 X 8.41 X 5.52 MM  
Carat Weight **5.55 CARATS**  
Color Grade **D**  
Clarity Grade **VVS 2**  
Depth **65.6%**  
Table **61%**  
Girdle **Slightly thick to thick**  
Culet **Pointed**  
Polish **EXCELLENT**  
Symmetry **EXCELLENT**  
Fluorescence **NONE**  
Inscription(s) **IGI LG760588400**

Comments: This Laboratory Grown Diamond was created by Chemical Vapor Deposition (CVD) growth process. Type IIa