

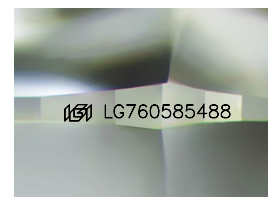
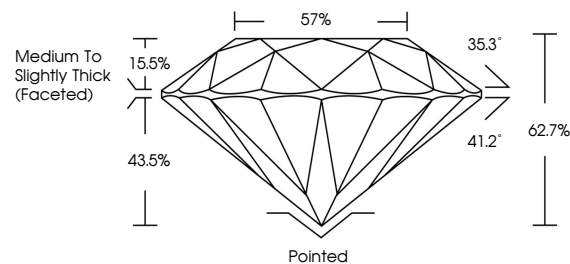


**ELECTRONIC COPY**

## LABORATORY GROWN DIAMOND REPORT

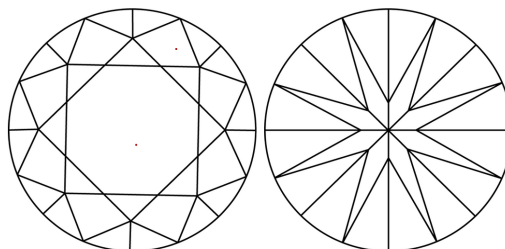
LG760585488  
Report verification at [igi.org](https://igi.org)

## PROPORTIONS



Sample Image Used

## CLARITY CHARACTERISTICS



### KEY TO SYMBOLS

Red symbols indicate internal characteristics.  
Green symbols indicate external characteristics.

## COLOR

D E F G H I J Faint Very Light Light

## CLARITY

FL	IF	VVS <sup>1-2</sup>	VS <sup>1-2</sup>	SI <sup>1-2</sup>	I <sup>1-3</sup>
Flawless	Internally Flawless	Very Very Slightly Included	Very Slightly Included	Slightly Included	Included

## LABORATORY GROWN DIAMOND REPORT



December 27, 2025

IGI Report Number **LG760585488**Description **LABORATORY GROWN DIAMOND**Shape and Cutting Style **ROUND BRILLIANT**

Measurements 8.08 - 8.13 X 5.09 MM

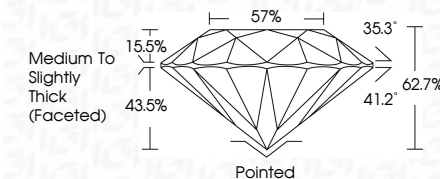
## GRADING RESULTS

Carat Weight **2.06 CARATS**

Color Grade F

Clarity Grade **VVS 2**

Cut Grade **EXCELLENT**



### ADDITIONAL GRADING INFORMATION

Polish EXCELLENT

Symmetry **EXCELLENT**Fluorescence **NONE**Inscription(s)  LG760585488

Comments: This Laboratory Grown Diamond was created by Chemical Vapor Deposition (CVD) growth process.  
Type IIa



© IGI 2020, International Gemological Institute

FD - 10 20



THIS DOCUMENT WAS PRODUCED WITH THE FOLLOWING SECURITY MEASURES: SPECIAL DOCUMENT PAPER, INK SCREENS, WATERMARK, BACKGROUND DESIGNS, HOLOGRAM AND OTHER SECURITY FEATURES NOT LISTED AND DO EXCEED DOCUMENT SECURITY INDUSTRY GUIDELINES

**www.igi.org**

December 27, 2025  
IGI Report No LG760585488  
ROUND BRILLIANT

8.00 - 8.13 X 5.09 MM	2.06 CARATS
Carat Weight	F 2
Color Grade	VVS 2
Clarity Grade	EXCELLENT
Cut Grade	62.7%
Depth	57%
Table	Medium to Slightly Thick Faceted
Girdle	Pointed
Culet	EXCELLENT
Polish	EXCELLENT
Symmetry	NONE
Fluorescence	4011 (57474546188)

**Comments:**  
This Laboratory Grown Diamond was created by Chemical Vapor Deposition (CVD) growth process.