



December 26, 2025

IGI Report Number **LG760584794**

**ROUND BRILLIANT
LABORATORY GROWN DIAMOND
5.03 - 5.07 X 3.11 MM**

Carat Weight	0.48 CARAT
Color Grade	D
Clarity Grade	I.F.
Cut Grade	IDEAL
Polish	EXCELLENT
Symmetry	EXCELLENT
Fluorescence	NONE
Inscription(s)	IGI LG760584794

Comments: This Laboratory Grown Diamond was created by Chemical Vapor Deposition (CVD) growth process. Type IIa

LABORATORY GROWN DIAMOND REPORT

December 26, 2025

IGI Report Number **LG760584794**

Description **LABORATORY GROWN DIAMOND**

Shape and Cutting Style **ROUND BRILLIANT**

Measurements **5.03 - 5.07 X 3.11 MM**

GRADING RESULTS

Carat Weight **0.48 CARAT**

Color Grade **D**

Clarity Grade **INTERNALLY FLAWLESS**

Cut Grade **IDEAL**

ADDITIONAL GRADING INFORMATION

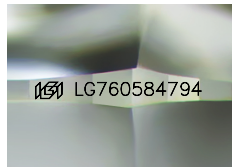
Polish **EXCELLENT**

Symmetry **EXCELLENT**

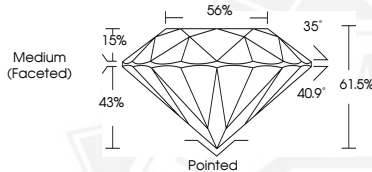
Fluorescence **NONE**

Inscription(s) **IGI LG760584794**

Comments: This Laboratory Grown Diamond was created by Chemical Vapor Deposition (CVD) growth process. Type IIa



Sample Image Used



December 26, 2025

IGI Report Number **LG760584794**

**ROUND BRILLIANT
LABORATORY GROWN DIAMOND
5.03 - 5.07 X 3.11 MM**

Carat Weight	0.48 CARAT
Color Grade	D
Clarity Grade	I.F.
Cut Grade	IDEAL
Polish	EXCELLENT
Symmetry	EXCELLENT
Fluorescence	NONE
Inscription(s)	IGI LG760584794

Comments: This Laboratory Grown Diamond was created by Chemical Vapor Deposition (CVD) growth process. Type IIa



THIS DOCUMENT WAS PRODUCED WITH THE FOLLOWING SECURITY MEASURES: SPECIAL DOCUMENT PAPER, INK SCREENS, WATERMARK, BACKGROUND DESIGNS, HOLOGRAM AND OTHER SECURITY FEATURES NOT LISTED AND DO EXCEED DOCUMENT SECURITY INDUSTRY GUIDELINES.