

**ELECTRONIC COPY**

## LABORATORY GROWN DIAMOND REPORT

|                         |                          |
|-------------------------|--------------------------|
| December 30, 2025       |                          |
| IGI Report Number       | LG760584327              |
| Description             | LABORATORY GROWN DIAMOND |
| Shape and Cutting Style | ROUND BRILLIANT          |
| Measurements            | 7.39 - 7.42 X 4.48 MM    |

## GRADING RESULTS

|               |            |
|---------------|------------|
| Carat Weight  | 1.51 CARAT |
| Color Grade   | E          |
| Clarity Grade | VS 1       |
| Cut Grade     | EXCELLENT  |

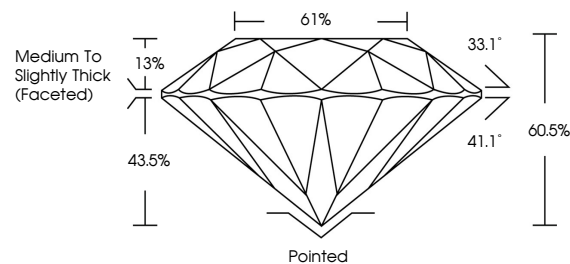
### ADDITIONAL GRADING INFORMATION

|                |   |
|----------------|---|
| Polish         | EXCELLENT   |
| Symmetry       | EXCELLENT   |
| Fluorescence   | NONE  |
| Inscription(s) |  LG760584327 |

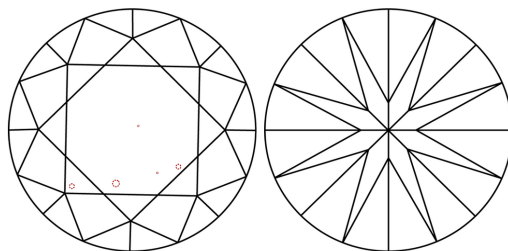
Comments: HEARTS & ARROWS  
This Laboratory Grown Diamond was created by  
Chemical Vapor Deposition (CVD) growth process.  
Type IIa

LG760584327  
Report verification at [igi.org](https://igi.org)

## PROPORTIONS



## CLARITY CHARACTERISTICS

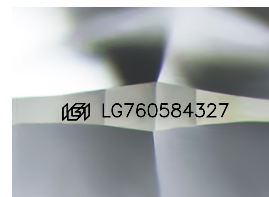


## KEY TO SYMBOLS

Red symbols indicate internal characteristics.  
Green symbols indicate external characteristics.



**www.igi.org**



Sample Image Used

## COLOR

D E F G H I J Faint Very Light Light

## CLARITY

| FL       | IF                  | VVS <sup>1-2</sup>          | VS <sup>1-2</sup>      | SI <sup>1-2</sup> | I <sup>1-3</sup> |
|----------|---------------------|-----------------------------|------------------------|-------------------|------------------|
| Flawless | Internally Flawless | Very Very Slightly Included | Very Slightly Included | Slightly Included | Included         |



© IGI 2020, International Gemological Institute

FD - 10 20



THIS DOCUMENT WAS PRODUCED WITH THE FOLLOWING SECURITY MEASURES: SPECIAL DOCUMENT PAPER, INK SCREENS, WATERMARK, BACKGROUND DESIGNS, HOLOGRAM AND OTHER SECURITY FEATURES NOT LISTED AND DO EXCEED DOCUMENT SECURITY INDUSTRY GUIDELINES

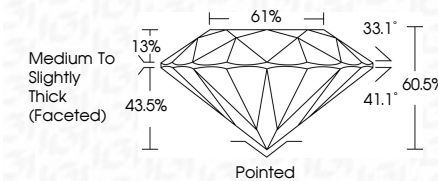
## LABORATORY GROWN DIAMOND REPORT



|                         |                          |
|-------------------------|--------------------------|
| December 30, 2025       |                          |
| IGI Report Number       | LG7605843272             |
| Description             | LABORATORY GROWN DIAMOND |
| Shape and Cutting Style | ROUND BRILLIANT          |
| Measurements            | 7.39 - 7.42 X 4.48 MM    |

## GRADING RESULTS

|               |            |
|---------------|------------|
| Carat Weight  | 1.51 CARAT |
| Color Grade   | E          |
| Clarity Grade | VS 1       |
| Cut Grade     | EXCELLENT  |



### ADDITIONAL GRADING INFORMATION

|                |                 |
|----------------|-----------------|
| Polish         | EXCELLENT       |
| Symmetry       | EXCELLENT       |
| Fluorescence   | NONE            |
| Inscription(s) | 151 LG760584327 |

Comments: HEARTS & ARROWS  
This Laboratory Grown Diamond was created by  
Chemical Vapor Deposition (CVD) growth process.  
Type IIa



IG

|  |                                    |
|--|------------------------------------|
| December 30, 2025  | 1.51 CARAT                         |
| IGI Report No. LG70594327  | E                                  |
| ROUND BRILLIANT  | VS1                                |
|  | EXCELLENT                          |
|  | 60.5%                              |
|  | 01%                                |
|  | Medium to Slightly Thick (Faceted) |
|  | Polished                           |
|  | EXCELLENT                          |
|  | EXCELLENT                          |
|  | NONE                               |
|  | ISSUE LG70594327                   |
| Comments:  |                                    |
| This Laboratory Grown Diamond was created by Chemical Vapor Deposition (CVD) growth process. |                                    |

**Comments:**  
HEARTS & ARROWS  
This Laboratory Grown Diamond was  
created by Chemical Vapor Deposition  
(CVD) growth process.