



ELECTRONIC COPY

LG760583969 Report verification at igi.org



December 27, 2025 IGI Report Number LG760583969 Description LABORATORY GROWN DIAMOND Shape and Cutting Style CUT CORNERED RECTANGULAR MODIFIED BRILLIANT Measurements 10.09 X 7.06 X 4.61 MM GRADING RESULTS Carat Weight 2.87 CARATS Color Grade G Clarity Grade VS 1

December 27, 2025 IGI Report Number LG760583969 Description LABORATORY GROWN DIAMOND Shape and Cutting Style CUT CORNERED RECTANGULAR MODIFIED BRILLIANT Measurements 10.09 X 7.06 X 4.61 MM

GRADING RESULTS

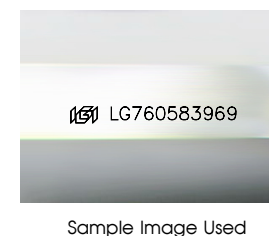
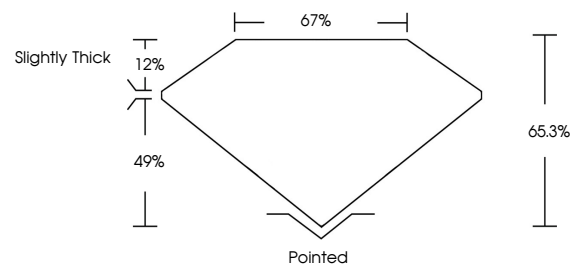
Carat Weight 2.87 CARATS Color Grade G Clarity Grade VS 1

ADDITIONAL GRADING INFORMATION

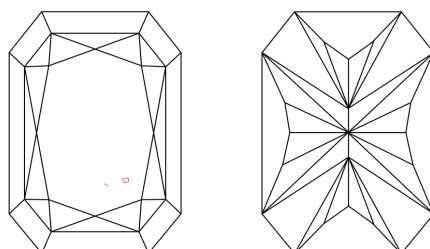
Polish EXCELLENT Symmetry EXCELLENT Fluorescence NONE Inscription(s) IGI LG760583969

Comments: This Laboratory Grown Diamond was created by Chemical Vapor Deposition (CVD) growth process. Type IIa

PROPORTIONS



CLARITY CHARACTERISTICS



KEY TO SYMBOLS

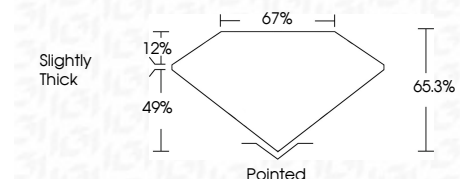
Red symbols indicate internal characteristics. Green symbols indicate external characteristics.

COLOR

D E F G H I J Faint Very Light Light

CLARITY

FL IF VS 1-2 VS 2-2 SI 1-2 I 1-3 Flawless Internally Flawless Very Very Slightly Included Very Slightly Included Slightly Included Included



ADDITIONAL GRADING INFORMATION

Polish EXCELLENT Symmetry EXCELLENT Fluorescence NONE Inscription(s) IGI LG760583969 Comments: This Laboratory Grown Diamond was created by Chemical Vapor Deposition (CVD) growth process. Type IIa



December 27, 2025 IGI Report No LG760583969 CUT CORNERED RECT. MODIFIED BRILLIANT 10.09 X 7.06 X 4.61 MM 2.87 CARATS G VS 1 65.3% 67% Slightly Thick Pointed EXCELLENT EXCELLENT NONE NONE IGI LG760583969 Comments: This Laboratory Grown Diamond was created by Chemical Vapor Deposition (CVD) growth process. Type IIa