



**ELECTRONIC COPY**

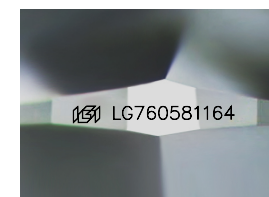
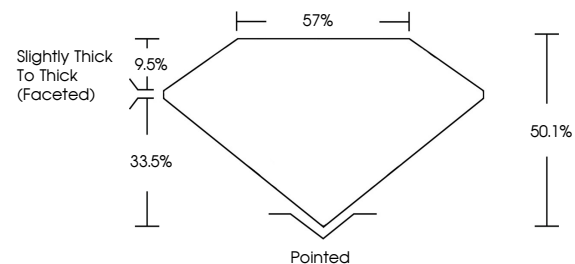
LG760581164  
Report verification at igi.org



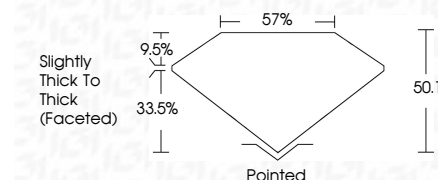
December 30, 2025  
IGI Report Number **LG760581164**  
Description **LABORATORY GROWN DIAMOND**  
Shape and Cutting Style **TRIANGULAR MODIFIED  
BRILLIANT**  
Measurements **10.16 X 10.21 X 5.12 MM**  
**GRADING RESULTS**  
Carat Weight **3.60 CARATS**  
Color Grade **FANCY VIVID YELLOW**  
Clarity Grade **VS 2**

December 30, 2025  
IGI Report Number **LG760581164**  
Description **LABORATORY GROWN DIAMOND**  
Shape and Cutting Style **TRIANGULAR MODIFIED  
BRILLIANT**  
Measurements **10.16 X 10.21 X 5.12 MM**  
**GRADING RESULTS**  
Carat Weight **3.60 CARATS**  
Color Grade **FANCY VIVID YELLOW**  
Clarity Grade **VS 2**

**PROPORTIONS**



Sample Image Used



**ADDITIONAL GRADING INFORMATION**

Polish **EXCELLENT**  
Symmetry **EXCELLENT**  
Fluorescence **NONE**  
Inscription(s) **IGI LG760581164**

Comments: This Laboratory Grown Diamond was created by Chemical Vapor Deposition (CVD) growth process.

**ADDITIONAL GRADING INFORMATION**

Polish **EXCELLENT**  
Symmetry **EXCELLENT**  
Fluorescence **NONE**  
Inscription(s) **IGI LG760581164**

Comments: This Laboratory Grown Diamond was created by Chemical Vapor Deposition (CVD) growth process.

**COLOR**

D E F G H I J Faint Very Light Light

**CLARITY**

FL	IF	VS <sup>1-2</sup>	VS <sup>1-2</sup>	SI <sup>1-2</sup>	I <sup>1-3</sup>
Flawless	Internally Flawless	Very Very Slightly Included	Very Slightly Included	Slightly Included	Included



**IGI**



December 30, 2025  
IGI Report No **LG760581164**  
**TRIANGULAR MODIFIED BRILLIANT**  
10.16 X 10.21 X 5.12 MM  
3.60 CARATS  
Color Grade **FANCY VIVID YELLOW**  
Clarity Grade **VS 2**  
Depth **60.1%**  
Table **57%**  
Girdle **Slightly Thick To Thick (Faceted)**  
Culet **Pointed**  
Polish **EXCELLENT**  
Symmetry **EXCELLENT**  
Fluorescence **NONE**  
Inscription(s) **IGI LG760581164**

Comments: This Laboratory Grown Diamond was created by Chemical Vapor Deposition (CVD) growth process.