



**ELECTRONIC COPY**

## LABORATORY GROWN DIAMOND REPORT

Measurements 6.24 X 5.33 X 3.62 MM

## GRADING RESULTS

Color Grade **FANCY INTENSE YELLOW**

Clarity Grade VS 1

### ADDITIONAL GRADING INFORMATION

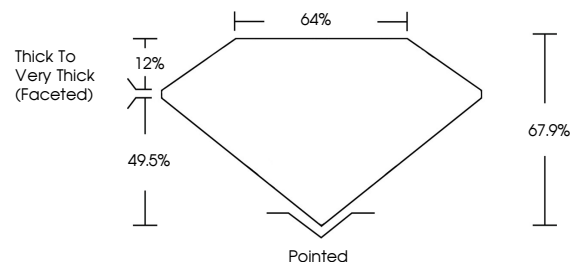
Polish **EXCELLENT**Symmetry **VERY GOOD**

Fluorescence VERY SLIGHT

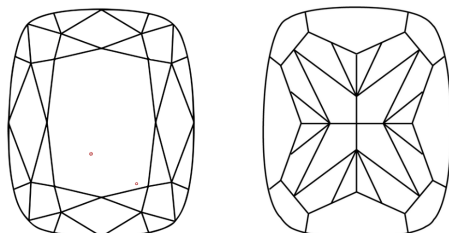
Inscription(s)  LG760580876

Comments: This Laboratory Grown Diamond was created by Chemical Vapor Deposition (CVD) growth process.  
Indications of post-growth treatment.

## PROPORTIONS

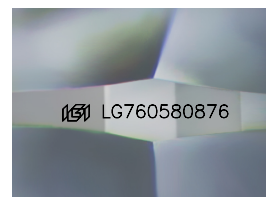


## CLARITY CHARACTERISTICS



## KEY TO SYMBOLS

Red symbols indicate internal characteristics.  
Green symbols indicate external characteristics.



Sample Image Used

## COLOR

D E F G H I J Faint Very Light Light

## CLARITY

FL	IF	VVS <sup>1-2</sup>	VS <sup>1-2</sup>	SI <sup>1-2</sup>	I <sup>1-3</sup>
Flawless	Internally Flawless	Very Very Slightly Included	Very Slightly Included	Slightly Included	Included

## LABORATORY GROWN DIAMOND REPORT



January 2, 2026

IGI Report Number **LG760580876**Description **LABORATORY GROWN DIAMOND**

Shape and Cutting Style **CUSHION MODIFIED  
BRILLIANT**

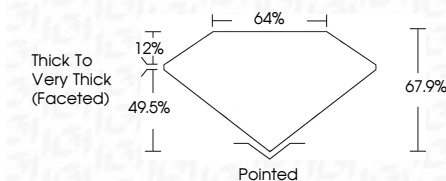
Measurements **6.24 X 5.33 X 3.62 MM**

## GRADING RESULTS

Carat Weight 1.00 CARAT

Color Grade **FANCY INTENSE YELLOW**

Clarity Grade VS 1



### ADDITIONAL GRADING INFORMATION

Polish **EXCELLENCE**Symmetry **VERY GOOD**

Fluorescence VERY SLIGHT

Inscription(s)  LG76058087

Comments: This Laboratory Grown Diamond was created by Chemical Vapor Deposition (CVD) growth process.  
Indications of post-growth treatment.



January 2, 2026	GJ Report No. LG7/0508076		CUSHION MODIFIED BRILLIANT	
1.00 CARAT				
Color Grade	Fancy Intense Yellow	VS 1		
Clarity Grade		67.9%	64%	
Depth		Think to Very Thick (Faced)		
Girdle		Polished		
Symmetry		EXCELLENT		
Fluorescence		VERY GOOD		
Inscriptions(s)		VERY SLIGHT		
		lg61 LG7/0508076		
<p>Comments:</p> <p>This Very Gray Diamond was treated by Chemical Vapor Deposition (CVD) growth process.</p> <p>Indications of post-growth treatment.</p>				