



**ELECTRONIC COPY**

## LABORATORY GROWN DIAMOND REPORT

December 26, 2025	
IGI Report Number	LG760575470
Description	LABORATORY GROWN DIAMOND
Shape and Cutting Style	CUT CORNERED RECTANGULAR MODIFIED BRILLIANT
Measurements	8.97 X 6.19 X 4.14 MM

## GRADING RESULTS

Carat Weight	2.02 CARATS
Color Grade	F
Clarity Grade	VS 1

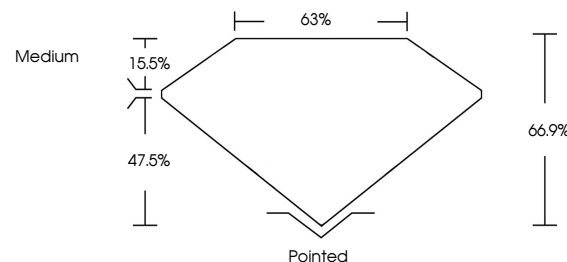
### ADDITIONAL GRADING INFORMATION

Polish	EXCELLENT
Symmetry	EXCELLENT
Fluorescence	NONE
Inscription(s)	 LG760575470

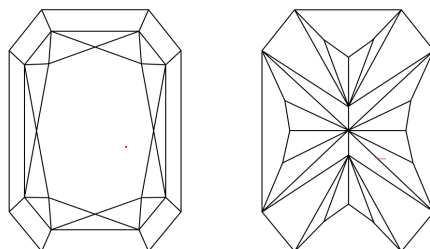
Comments: This Laboratory Grown Diamond was created by Chemical Vapor Deposition (CVD) growth process.  
Type IIa

LG760575470  
Report verification at [lgi.org](https://lgi.org)

## PROPORTIONS

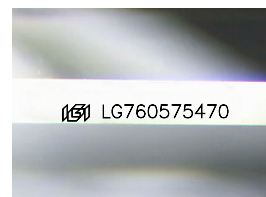


## CLARITY CHARACTERISTICS



## KEY TO SYMBOLS

Red symbols indicate internal characteristics.  
Green symbols indicate external characteristics.



Sample Image Used

## COLOR

D E F G H I J Faint Very Light Light

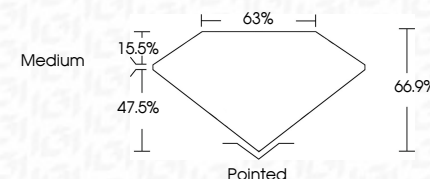
## CLARITY

FL	IF	VVS <sup>1-2</sup>	VS <sup>1-2</sup>	SI <sup>1-2</sup>	I <sup>1-3</sup>
Flawless	Internally Flawless	Very Very Slightly Included	Very Slightly Included	Slightly Included	Included

## LABORATORY GROWN DIAMOND REPORT



December 26, 2025	
IGI Report Number	LG760575470
Description	LABORATORY GROWN DIAMOND
Shape and Cutting Style	CUT CORNERED RECTANGULAR MODIFIED BRILLIANT
Measurements	8.97 X 6.19 X 4.14 MM
<b>GRADING RESULTS</b>	
Carat Weight	2.02 CARATS
Color Grade	F
Clarity Grade	VS 1



### ADDITIONAL GRADING INFORMATION

Polish	EXCELLENT
Symmetry	EXCELLENT
Fluorescence	NONE
Inscription(s)	<del>(G)</del> LG760575470
Comments: This Laboratory Grown Diamond was created by Chemical Vapor Deposition (CVD) growth process.	
Type IIa	



© IGI 2020, International Gemological Institute

FD - 10 20

**www.igi.org**

THIS DOCUMENT WAS PRODUCED WITH THE FOLLOWING SECURITY MEASURES: SPECIAL DOCUMENT PAPER, INK SCREENS, WATERMARK, BACKGROUND DESIGNS, HOLOGRAM AND OTHER SECURITY FEATURES NOT LISTED AND DO EXCEED DOCUMENT SECURITY INDUSTRY GUIDELINE

December 26, 2025	GI Report No LG760575470
CUT CORNERED RECT. MODIFIED BRILLIANT	
1.97 X 6.19 X 4.14 MM	2.02 CARATS
Color Grade	Vs1
Clarity Grade	64.9%
Depth	65%
Table	Medium
Girdle	
Fluorescence	Pointed
Symmetry	EXCELLENT
Measurements (mm)	EXCELLENT
	NONE
	1.98 LG760575470

Comments: This Fancy Grown Diamond was created by Chemical Vapor Deposition (CVD) growth process.

Type IIa