



**ELECTRONIC COPY**

LG760573147  
Report verification at igi.org



January 15, 2026

IGI Report Number **LG760573147**

Description **LABORATORY GROWN DIAMOND**

Shape and Cutting Style **EMERALD CUT**

Measurements **10.56 X 6.62 X 4.22 MM**

**GRADING RESULTS**

Carat Weight **3.08 CARATS**

Color Grade **FANCY VIVID GREEN**

Clarity Grade **VVS 2**

**LABORATORY GROWN DIAMOND REPORT**

January 15, 2026

IGI Report Number **LG760573147**

Description **LABORATORY GROWN DIAMOND**

Shape and Cutting Style **EMERALD CUT**

Measurements **10.56 X 6.62 X 4.22 MM**

**GRADING RESULTS**

Carat Weight **3.08 CARATS**

Color Grade **FANCY VIVID GREEN**

Clarity Grade **VVS 2**

**ADDITIONAL GRADING INFORMATION**

Polish **EXCELLENT**

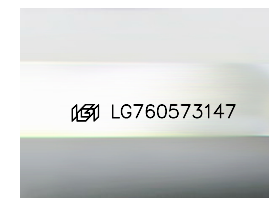
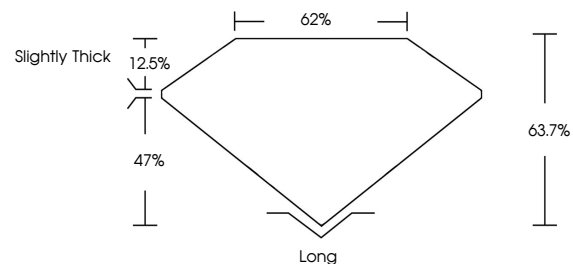
Symmetry **EXCELLENT**

Fluorescence **NONE**

Inscription(s) **IGI LG760573147**

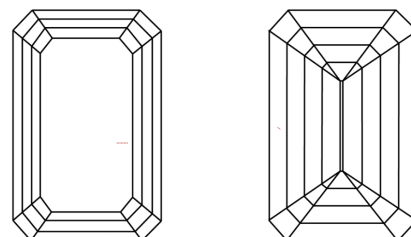
Comments: This Laboratory Grown Diamond was created by Chemical Vapor Deposition (CVD) growth process. Indications of post-growth treatment.

**PROPORTIONS**



Sample Image Used

**CLARITY CHARACTERISTICS**



**KEY TO SYMBOLS**

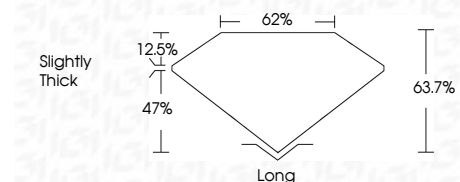
Red symbols indicate internal characteristics.  
Green symbols indicate external characteristics.

**COLOR**

D E F G H I J Faint Very Light Light

**CLARITY**

FL	IF	VVS <sup>1-2</sup>	VS <sup>1-2</sup>	SI <sup>1-2</sup>	I <sup>1-3</sup>
Flawless	Internally Flawless	Very Very Slightly Included	Very Slightly Included	Slightly Included	Included



**ADDITIONAL GRADING INFORMATION**

Polish **EXCELLENT**

Symmetry **EXCELLENT**

Fluorescence **NONE**

Inscription(s) **IGI LG760573147**

Comments: This Laboratory Grown Diamond was created by Chemical Vapor Deposition (CVD) growth process. Indications of post-growth treatment.



January 15, 2026  
IGI Report No LG760573147  
EMERALD CUT

3.08 CARATS  
FANCY VIVID GREEN

VVS 2  
63.7%  
62%

Slightly Thick

Long  
EXCELLENT  
EXCELLENT  
NONE  
IGI LG760573147

Comments: This Laboratory Grown Diamond was created by Chemical Vapor Deposition (CVD) growth process. Indications of post-growth treatment.