



ELECTRONIC COPY

LG760571517
Report verification at igi.org



February 11, 2026
IGI Report Number **LG760571517**
Description **LABORATORY GROWN DIAMOND**
Shape and Cutting Style **SQUARE CUSHION MODIFIED BRILLIANT**
Measurements **7.21 X 6.89 X 4.45 MM**
GRADING RESULTS
Carat Weight **1.87 CARAT**
Color Grade **FANCY VIVID BLUE**
Clarity Grade **VS 2**

February 11, 2026
IGI Report Number **LG760571517**
Description **LABORATORY GROWN DIAMOND**
Shape and Cutting Style **SQUARE CUSHION MODIFIED BRILLIANT**
Measurements **7.21 X 6.89 X 4.45 MM**

GRADING RESULTS

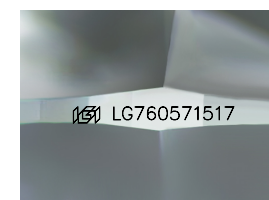
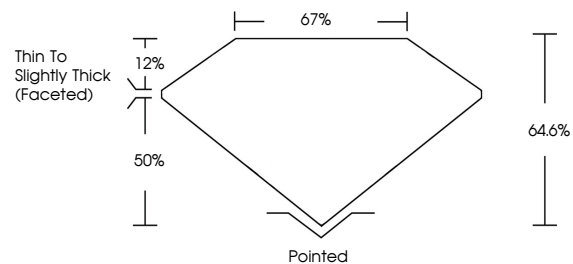
Carat Weight **1.87 CARAT**
Color Grade **FANCY VIVID BLUE**
Clarity Grade **VS 2**

ADDITIONAL GRADING INFORMATION

Polish **VERY GOOD**
Symmetry **EXCELLENT**
Fluorescence **NONE**
Inscription(s) **IGI LG760571517**

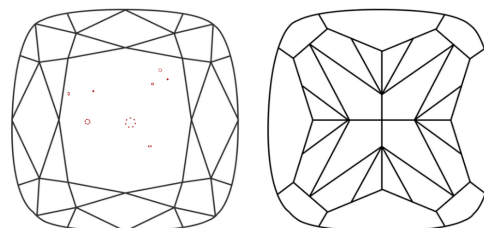
Comments: This Laboratory Grown Diamond was created by Chemical Vapor Deposition (CVD) growth process. Indications of post-growth treatment.

PROPORTIONS



Sample Image Used

CLARITY CHARACTERISTICS



KEY TO SYMBOLS

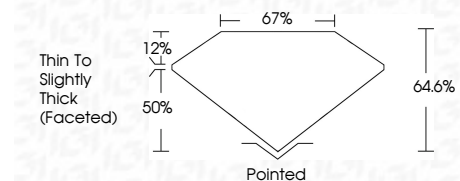
Red symbols indicate internal characteristics.
Green symbols indicate external characteristics.

COLOR

D E F G H I J Faint Very Light Light

CLARITY

FL	IF	VS ¹⁻²	VS ¹⁻²	SI ¹⁻²	I ¹⁻³
Flawless	Internally Flawless	Very Very Slightly Included	Very Slightly Included	Slightly Included	Included



ADDITIONAL GRADING INFORMATION

Polish **VERY GOOD**
Symmetry **EXCELLENT**
Fluorescence **NONE**
Inscription(s) **IGI LG760571517**
Comments: This Laboratory Grown Diamond was created by Chemical Vapor Deposition (CVD) growth process. Indications of post-growth treatment.



February 11, 2026
IGI Report No LG760571517
SQUARE CUSHION MODIFIED BRILLIANT
7.21 X 6.89 X 4.45 MM
1.87 CARAT
FANCY VIVID BLUE
VS 2
64.6%
67%
Thin to Slightly Thick (Faceted)
Pointed
VERY GOOD
EXCELLENT
NONE
IGI LG760571517
Comments: This Laboratory Grown Diamond was created by Chemical Vapor Deposition (CVD) growth process. Indications of post-growth treatment.