



ELECTRONIC COPY

LG760569131
Report verification at igi.org



January 21, 2026
IGI Report Number **LG760569131**
Description **LABORATORY GROWN DIAMOND**
Shape and Cutting Style **PEAR MIXED CUT**
Measurements **12.80 X 8.13 X 2.76 MM**
GRADING RESULTS
Carat Weight **2.43 CARATS**
Color Grade **LIGHT ORANGY BROWN**
Clarity Grade **VVS 1**

LABORATORY GROWN DIAMOND REPORT

January 21, 2026
IGI Report Number **LG760569131**
Description **LABORATORY GROWN DIAMOND**
Shape and Cutting Style **PEAR MIXED CUT**
Measurements **12.80 X 8.13 X 2.76 MM**

GRADING RESULTS

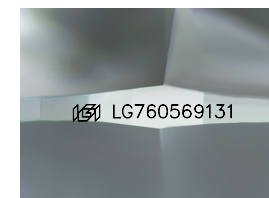
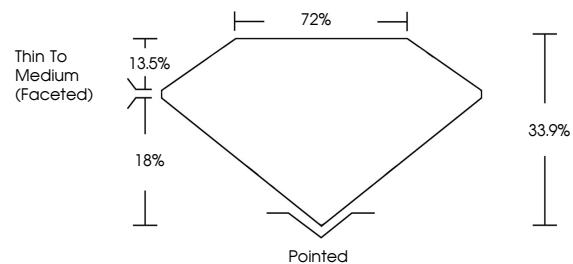
Carat Weight **2.43 CARATS**
Color Grade **LIGHT ORANGY BROWN**
Clarity Grade **VVS 1**

ADDITIONAL GRADING INFORMATION

Polish **EXCELLENT**
Symmetry **EXCELLENT**
Fluorescence **SLIGHT**
Inscription(s) **IGI LG760569131**

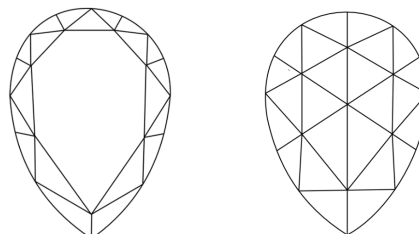
Comments: This Laboratory Grown Diamond was created by Chemical Vapor Deposition (CVD) growth process.
Indications of post-growth treatment.

PROPORTIONS



Sample Image Used

CLARITY CHARACTERISTICS



KEY TO SYMBOLS

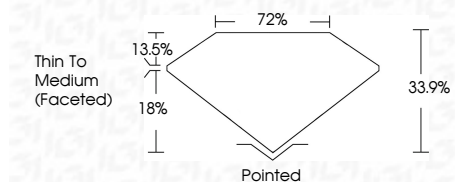
Red symbols indicate internal characteristics.
Green symbols indicate external characteristics.

COLOR

D E F G H I J Faint Very Light Light

CLARITY

FL	IF	VVS ¹⁻²	VS ¹⁻²	SI ¹⁻²	I ¹⁻³
Flawless	Internally Flawless	Very Very Slightly Included	Very Slightly Included	Slightly Included	Included



ADDITIONAL GRADING INFORMATION

Polish **EXCELLENT**
Symmetry **EXCELLENT**
Fluorescence **SLIGHT**
Inscription(s) **IGI LG760569131**
Comments: This Laboratory Grown Diamond was created by Chemical Vapor Deposition (CVD) growth process.
Indications of post-growth treatment.



January 21, 2026
IGI Report No LG760569131
PEAR MIXED CUT
12.80 X 8.13 X 2.76 MM
Carat Weight **2.43 CARATS**
Color Grade **LIGHT ORANGY BROWN**
Clarity Grade **VVS 1**
Depth **33.9%**
Table **72%**
Girdle **Thin To Medium (Faceted)**
Culet **Pointed**
Polish **EXCELLENT**
Symmetry **EXCELLENT**
Fluorescence **SLIGHT**
Inscription(s) **IGI LG760569131**
Comments: This Laboratory Grown Diamond was created by Chemical Vapor Deposition (CVD) growth process.
Indications of post-growth treatment.