



ELECTRONIC COPY

LG760568715
Report verification at igi.org



January 21, 2026

IGI Report Number **LG760568715**

Description **LABORATORY GROWN DIAMOND**

Shape and Cutting Style **ROUND BRILLIANT**

Measurements **6.34 - 6.39 X 3.97 MM**

GRADING RESULTS

Carat Weight **1.01 CARAT**

Color Grade **D**

Clarity Grade **VVS 2**

Cut Grade **IDEAL**

January 21, 2026

IGI Report Number **LG760568715**

Description **LABORATORY GROWN DIAMOND**

Shape and Cutting Style **ROUND BRILLIANT**

Measurements **6.34 - 6.39 X 3.97 MM**

GRADING RESULTS

Carat Weight **1.01 CARAT**

Color Grade **D**

Clarity Grade **VVS 2**

Cut Grade **IDEAL**

ADDITIONAL GRADING INFORMATION

Polish **EXCELLENT**

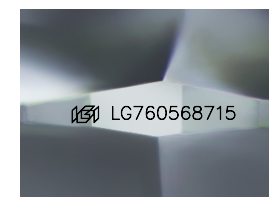
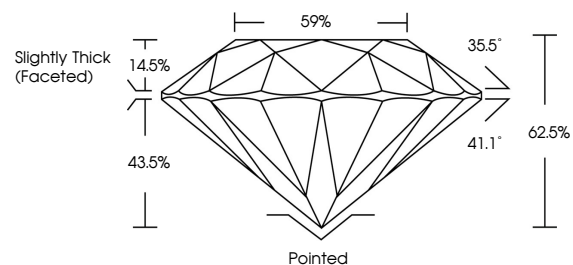
Symmetry **EXCELLENT**

Fluorescence **NONE**

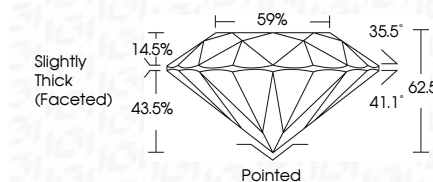
Inscription(s) **LG760568715**

Comments: This Laboratory Grown Diamond was created by Chemical Vapor Deposition (CVD) growth process. Type IIa

PROPORTIONS



Sample Image Used



COLOR

D E F G H I J Faint Very Light Light

CLARITY

FL	IF	VVS ¹⁻²	VS ¹⁻²	SI ¹⁻²	I ¹⁻³
Flawless	Internally Flawless	Very Very Slightly Included	Very Slightly Included	Slightly Included	Included

ADDITIONAL GRADING INFORMATION

Polish **EXCELLENT**

Symmetry **EXCELLENT**

Fluorescence **NONE**

Inscription(s) **LG760568715**

Comments: This Laboratory Grown Diamond was created by Chemical Vapor Deposition (CVD) growth process. Type IIa



IGI



January 21, 2026	1.01 CARAT	D	Pointed
IGI Report No LG760568715	EXCELLENT	VVS 2	EXCELLENT
ROUND BRILLIANT	6.34 - 6.39 X 3.97 MM	IDEAL	EXCELLENT
Carat Weight	Color Grade	Depth	Symmetry
1.01	D	62.5%	EXCELLENT
6.34 - 6.39 X 3.97 MM	Color Grade	Girdle	Fluorescence
D	VVS 2	Slightly Thick (Faceted)	NONE
IDEAL	IDEAL	62.5%	NONE
62.5%	IDEAL	59%	None
Slightly Thick (Faceted)	Pointed	Inscription(s)	None
EXCELLENT	EXCELLENT	IGI LG760568715	
EXCELLENT	EXCELLENT		
None	None		
None	None		

Comments: This Laboratory Grown Diamond was created by Chemical Vapor Deposition (CVD) growth process. Type IIa