



ELECTRONIC COPY

LABORATORY GROWN DIAMOND REPORT

December 31, 2025	
IGI Report Number	LG760567686
Description	LABORATORY GROWN DIAMOND
Shape and Cutting Style	ROUND BRILLIANT
Measurements	9.33 - 9.38 X 5.73 MM

GRADING RESULTS

Carat Weight	3.05 CARATS
Color Grade	F
Clarity Grade	VS 1
Cut Grade	IDEAL

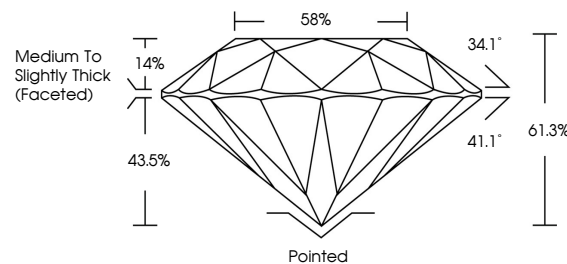
ADDITIONAL GRADING INFORMATION

Polish	EXCELLENT
Symmetry	EXCELLENT
Fluorescence	NONE
Inscription(s)	 LG760567686

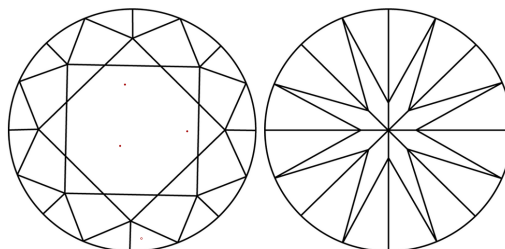
Comments: This Laboratory Grown Diamond was created by Chemical Vapor Deposition (CVD) growth process. Type IIa

LG760567686
Report verification at lgi.org

PROPORTIONS

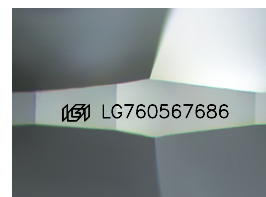


CLARITY CHARACTERISTICS



KEY TO SYMBOLS

Red symbols indicate internal characteristics.
Green symbols indicate external characteristics.



Sample Image Used

COLOR

D E F G H I J Faint Very Light Light

CLARITY

FL	IF	VVS ¹⁻²	VS ¹⁻²	SI ¹⁻²	I ¹⁻³
Flawless	Internally Flawless	Very Very Slightly Included	Very Slightly Included	Slightly Included	Included

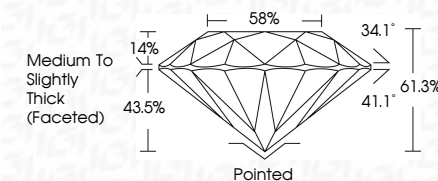
LABORATORY GROWN DIAMOND REPORT



December 31, 2025	
IGI Report Number	LG760567686
Description	LABORATORY GROWN DIAMOND
Shape and Cutting Style	ROUND BRILLIANT
Measurements	9.33 - 9.38 X 5.73 MM

GRADING RESULTS

Carat Weight	3.05 CARATS
Color Grade	F
Clarity Grade	VS 1
Cut Grade	IDEAL



ADDITIONAL GRADING INFORMATION

Polish	EXCELLENT
Symmetry	EXCELLENT
Fluorescence	NONE
Inscription(s)	(G) LG760567686

Comments: This Laboratory Grown Diamond was created by Chemical Vapor Deposition (CVD) growth process. Type IIa



IG



© IGI 2020, International Gemological Institute

FD - 10 20



THIS DOCUMENT WAS PRODUCED WITH THE FOLLOWING SECURITY MEASURES: SPECIAL DOCUMENT PAPER, INK SCREENS, WATERMARK, BACKGROUND DESIGNS, HOLOGRAM AND OTHER SECURITY FEATURES NOT LISTED AND DO EXCEED DOCUMENT SECURITY INDUSTRY GUIDELINES

December 31, 2025
GI Report No LG760567686
ROUND BRILLIANT

33 - 9.38 X 5.73 MM	Color Grade	Clarity Grade	VS 1	3.05 CARATS F
Carat Weight	Cut Grade	IDEAL		
Depth	Table	61.9%		
Girdle	Medium to Slightly Thick (Faceted)	58%		
Culet	Pointed	Excellent		
Polish	Symmetry	Excellent	None	4mm (27.05/27.64)
Fluorescence				
Color Notes				

Comments:
This Laboratory Grown Diamond was
Created by Chemical Vapor Deposition



www.igi.org