



**ELECTRONIC COPY**

## LABORATORY GROWN DIAMOND REPORT

|                         |  |
|-------------------------|--|
| December 28, 2025       |  |
| IGI Report Number       | LG760567471                                    |
| Description             | LABORATORY GROWN DIAMOND                       |
| Shape and Cutting Style | CUT CORNERED RECTANGULAR<br>MODIFIED BRILLIANT |
| Measurements            | 10.33 X 7.10 X 4.72 MM                         |

## GRADING RESULTS

|               |             |
|---------------|-------------|
| Carat Weight  | 3.01 CARATS |
| Color Grade   | E           |
| Clarity Grade | VVS 2       |

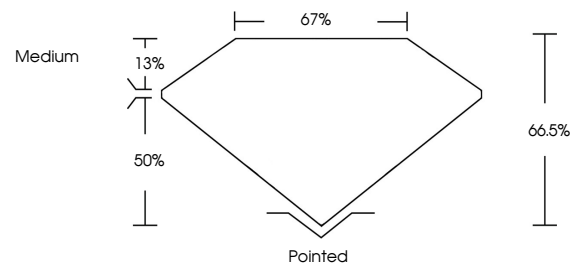
### ADDITIONAL GRADING INFORMATION

|                |             |
|----------------|-------------|
| Polish         | EXCELLENT   |
| Symmetry       | EXCELLENT   |
| Fluorescence   | NONE        |
| Inscription(s) | LG760567471 |

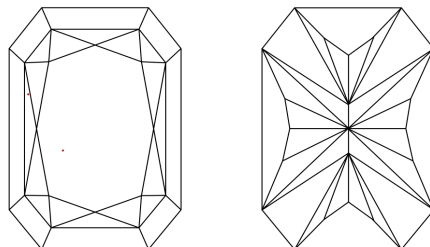
Comments: This Laboratory Grown Diamond was created by Chemical Vapor Deposition (CVD) growth process.  
Type IIa

LG760567471  
Report verification at [lgi.org](https://lgi.org)

## PROPORTIONS

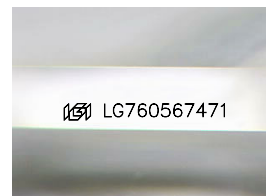


## CLARITY CHARACTERISTICS



### KEY TO SYMBOLS

Red symbols indicate internal characteristics.  
Green symbols indicate external characteristics.



Sample Image Used

## COLOR

D E F G H I J Faint Very Light Light

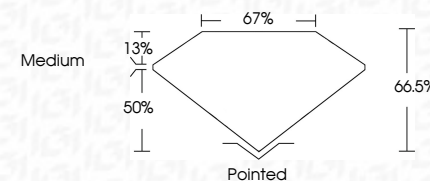
## CLARITY

| FL       | IF                  | VVS <sup>1-2</sup>          | VS <sup>1-2</sup>      | SI <sup>1-2</sup> | I <sup>1-3</sup> |
|----------|---------------------|-----------------------------|------------------------|-------------------|------------------|
| Flawless | Internally Flawless | Very Very Slightly Included | Very Slightly Included | Slightly Included | Included         |

## LABORATORY GROWN DIAMOND REPORT



|                         |   |
|-------------------------|---|
| December 28, 2025       |   |
| IGI Report Number       | LG760567471                                       |
| Description             | LABORATORY GROWN DIAMOND                          |
| Shape and Cutting Style | CUT CORNERED<br>RECTANGULAR MODIFIED<br>BRILLIANT |
| Measurements            | 10.33 X 7.10 X 4.72 MM                            |
| <b>GRADING RESULTS</b>  |   |
| Carat Weight            | 3.01 CARATS                                       |
| Color Grade             | E   |
| Clarity Grade           | VVS 2   |



### ADDITIONAL GRADING INFORMATION

|   |                          |
|---|--------------------------|
| Polish  | EXCELLENT                |
| Symmetry  | EXCELLENT                |
| Fluorescence  | NONE                     |
| Inscription(s)  | <del>LG</del> LG76056747 |
| <p>Comments: This Laboratory Grown Diamond was created by Chemical Vapor Deposition (CVD) growth process.</p> <p>Type IIa</p> |                          |



© IGI 2020, International Gemmological Institute

FD - 10 20

**www.igi.org**



THIS DOCUMENT WAS PRODUCED WITH THE FOLLOWING SECURITY MEASURES: SPECIAL DOCUMENT PAPER, INK SCREENS, WATERMARK, BACKGROUND DESIGNS, HOLOGRAM AND OTHER SECURITY FEATURES NOT LISTED AND DO EXCEED DOCUMENT SECURITY INDUSTRY GUIDELINES

|                   |                                      |             |               |                 |   |
|-------------------|--------------------------------------|-------------|---------------|-----------------|---|
| December 28, 2025 | GI Report No. LG760567/1             | 3.01 CARATS | VVS 2         | Polished        | Comments:<br>This Laboratory Grown Diamond was<br>created by Chemical Vapor Deposition<br>(CVD) growth process.<br>Type IIa |
|                   | CU CORNERED RECT. MODIFIED BRILLIANT |             | 66.6%         | EXCELLENT       |   |
|                   |                                      |             | 67%           | EXCELLENT       |   |
|                   |                                      |             | Medium        | NONE            |   |
|                   |                                      |             |               | 681 LG760567/1  |   |
|                   | 10.33 X 7.10 X 4.72 MM               |             |               |                 |   |
|                   | Corat Weight                         | Color Grade | Clarity Grade | Symmetry        |   |
|                   |                                      |             | Depth         | Fluorescence    |   |
|                   |                                      |             | Table         | Inscriptions(s) |   |
|                   |                                      |             | Girdle        |                 |   |
|                   |                                      |             |               | Culet           |   |
|                   |                                      |             |               | Polish          |   |