



ELECTRONIC COPY

LG760566394
Report verification at igi.org



December 30, 2025

IGI Report Number **LG760566394**

Description **LABORATORY GROWN DIAMOND**

Shape and Cutting Style **PEAR MODIFIED BRILLIANT**

Measurements **7.90 X 5.12 X 3.47 MM**

GRADING RESULTS

Carat Weight **1.03 CARAT**

Color Grade **FANCY LIGHT YELLOW**

Clarity Grade **VS 1**

December 30, 2025
IGI Report Number **LG760566394**
Description **LABORATORY GROWN DIAMOND**
Shape and Cutting Style **PEAR MODIFIED BRILLIANT**
Measurements **7.90 X 5.12 X 3.47 MM**

GRADING RESULTS

Carat Weight **1.03 CARAT**

Color Grade **FANCY LIGHT YELLOW**

Clarity Grade **VS 1**

ADDITIONAL GRADING INFORMATION

Polish **EXCELLENT**

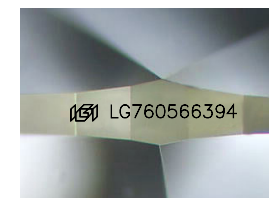
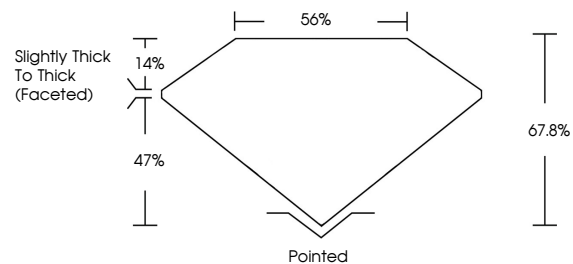
Symmetry **EXCELLENT**

Fluorescence **NONE**

Inscription(s) **LG760566394**

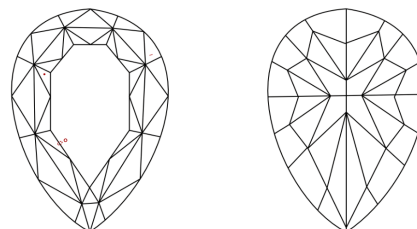
Comments: This Laboratory Grown Diamond was created by Chemical Vapor Deposition (CVD) growth process.

PROPORTIONS



Sample Image Used

CLARITY CHARACTERISTICS



KEY TO SYMBOLS

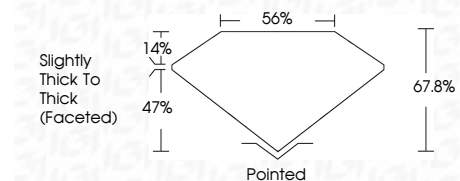
Red symbols indicate internal characteristics.
Green symbols indicate external characteristics.

COLOR

D E F G H I J Faint Very Light Light

CLARITY

FL	IF	VS ¹⁻²	VS ¹⁻²	SI ¹⁻²	I ¹⁻³
Flawless	Internally Flawless	Very Very Slightly Included	Very Slightly Included	Slightly Included	Included



ADDITIONAL GRADING INFORMATION

Polish **EXCELLENT**

Symmetry **EXCELLENT**

Fluorescence **NONE**

Inscription(s) **LG760566394**

Comments: This Laboratory Grown Diamond was created by Chemical Vapor Deposition (CVD) growth process.



IGI



December 30, 2025
IGI Report No **LG760566394**
PEAR MODIFIED BRILLIANT

7.90 X 5.12 X 3.47 MM

Carat Weight **1.03 CARAT**
Color Grade **FANCY LIGHT YELLOW**
Clarity Grade **VS 1**
Depth **67.8%**
Table **56%**
Girdle **Slightly Thick To Thick (Faceted)**

Culet **Pointed**
Polish **EXCELLENT**
Symmetry **EXCELLENT**
Fluorescence **NONE**
Inscription(s) **LG760566394**

Comments: This Laboratory Grown Diamond was created by Chemical Vapor Deposition (CVD) growth process.