



ELECTRONIC COPY

LG760566380
Report verification at igi.org



December 30, 2025

IGI Report Number **LG760566380**

Description **LABORATORY GROWN DIAMOND**

Shape and Cutting Style **EMERALD CUT**

Measurements **7.05 X 5.10 X 3.09 MM**

GRADING RESULTS

Carat Weight **1.07 CARAT**

Color Grade **FANCY VIVID PINK**

Clarity Grade **VVS 2**

December 30, 2025
IGI Report Number **LG760566380**
Description **LABORATORY GROWN DIAMOND**
Shape and Cutting Style **EMERALD CUT**
Measurements **7.05 X 5.10 X 3.09 MM**

GRADING RESULTS

Carat Weight **1.07 CARAT**

Color Grade **FANCY VIVID PINK**

Clarity Grade **VVS 2**

ADDITIONAL GRADING INFORMATION

Polish **VERY GOOD**

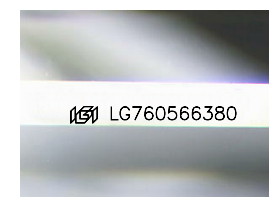
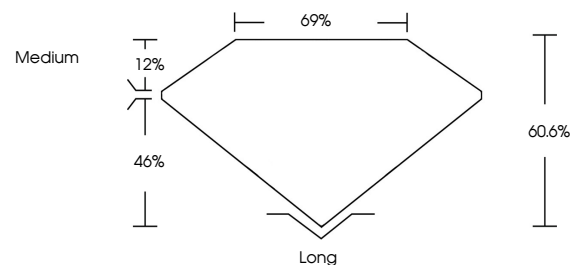
Symmetry **VERY GOOD**

Fluorescence **STRONG**

Inscription(s) **LG760566380**

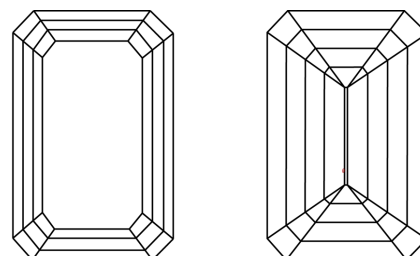
Comments: This Laboratory Grown Diamond was created by Chemical Vapor Deposition (CVD) growth process.
Indications of post-growth treatment.

PROPORTIONS



Sample Image Used

CLARITY CHARACTERISTICS



KEY TO SYMBOLS

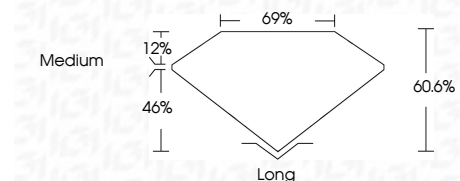
Red symbols indicate internal characteristics.
Green symbols indicate external characteristics.

COLOR

D E F G H I J Faint Very Light Light

CLARITY

FL	IF	VVS ¹⁻²	VS ¹⁻²	SI ¹⁻²	I ¹⁻³
Flawless	Internally Flawless	Very Very Slightly Included	Very Slightly Included	Slightly Included	Included



ADDITIONAL GRADING INFORMATION

Polish **VERY GOOD**

Symmetry **VERY GOOD**

Fluorescence **STRONG**

Inscription(s) **LG760566380**

Comments: This Laboratory Grown Diamond was created by Chemical Vapor Deposition (CVD) growth process.
Indications of post-growth treatment.



IGI



December 30, 2025
IGI Report No. **LG760566380**
EMERALD CUT

1.07 CARAT
Carat Weight
FANCY VIVID PINK
Color Grade

VVS 2
Clarity Grade
60.6%
Depth
69%
Table
Medium
Girdle

Long
Culet
VERY GOOD
Polish
VERY GOOD
Symmetry
STRONG
Fluorescence
Inscription(s)
 LG760566380

Comments: This Laboratory Grown Diamond was created by Chemical Vapor Deposition (CVD) growth process.
Indications of post-growth treatment.